

PALUX X-Line

PRICE LIST

Prices valid from 1st February 2023



PALUX

Die große Freiheit

PALUX X-Line - List of Contents

	Page
PALUX X-Line - Overview	5
Single-Pan Deep-Fat Fryer	7
Single-Pan Deep-Fat Fryer with downwards drain	7
Single-Pan Deep-Fat Fryer with fat-filter-pump system and downwards drain	7
Dual-Pan Deep-Fat Fryer	8
Dual-Pan Deep-Fat Fryer with downwards drain	8
Dual-Pan Deep-Fat Fryer with fat-filter-pump system and downwards drain	8
Chip Scuttle GN 1/1	9
Bain-Marie GN 1/1	9
Bain-Marie GN 1/1 with downwards drain	9
Cooker GN 1/1	10
Cooker GN 1/1 with downwards drain	10
Pan 400	11
Pan 400 with downwards drain	11
Pan 600	12
Pan 600 with downwards drain	12
Griddle Plate 400	13
Griddle Plate 400 with downwards drain	13
Griddle Plate 600	14
Griddle Plate 600 with downwards drain	14
Griddle Plate 800 S	15
Griddle Plate 800 S with downwards drain	15
Grill-/Griddle Plate 600	16
Grill-/Griddle Plate 600 with downwards drain	16
Steak Grill 400	17
Steak Grill 400 with downwards drain	17
Steak Grill 600	18
Steak Grill 600 with downwards drain	18
Steak Grill 800	19
Steak Grill 800 with downwards drain	19
Sausage Grill 600	20
Ceramic Range 1	20
2-Plate Electric Range	21
Electric Baking Oven GN 1 1/2	21
Induction Range 1	22

PALUX X-Line - List of Contents

	Page
Induction Range 2	22
Induction Wok 1	23
Induction Wok 2	23
Ceramic Range F1	24
Ceramic Range F3	24
Induction Range F	25
Induction hob 4Z	26
Induction Range F1	26
Induction Range F2	26
Induction Range F3	27
Induction Range F4	27
2-Burner Gas Range	28
Gas Grill 600	29
Gas Grill 800	29
Gas Lava Stone Grill 600	30
Gas Lava Stone Grill 800	30
Surcharge for brass-look of control knob	31
Surcharge module seamlessly welded into upper part of range	31
Integration of third-party devices	31
Accessories Deep Fat Fryer	31
Accessories Cooker	31
Accessories Pan / Griddle Plate / Steak Grill	32
Accessories Ceramic Range / Induction Range	32
Accessories Induction Wok	32
Accessories gas drop-in modules	32
Installation versions for base cabinet XLG Depth 440 mm	33
Installation versions for base cabinet XLG Depth 640 mm	33
Installation versions for base cabinet XLG Depth 740 mm	33
Installation versions for base cabinet XH, electric baking oven and refrigerated element XLG, Depth 675 / 740 / 940 mm	34
Optional feature - Mobile Base Cabinet	34
Plinth panel / Plinth frame	34
Side panel	35
Rear Panel	35
Side panel	35
Side cover	36

PALUX X-Line - List of Contents

	Page
Socket	36
Splash Guard	37
Partition wall	37
PALUX X-Line - Product Code Base cabinets XLG	38
Base cabinet closed on three sides XLGOS	39
Base cabinet closed on three sides for X-Line Deep Fat Fryers XLGOS-U	40
Base cabinet closed on three sides for X-Line Cooker / Bain-Marie XLGOS-UK	40
Base cabinet closed on three sides for X-Line Pan / Griddle Plate / Grill-/Griddle Plate / Steak Grill XLGOS-UB	41
Base cabinet with folding door(s) XLGFT	42
Base cabinet with folding door for X-Line Deep Fat Fryers XLGFT-U	43
Base cabinet with folding door for X-Line Deep Fat Fryers XLGFT-UF	43
Base cabinet with folding door for X-Line Induction XLGFT-I	44
Base cabinet with drawers XLGSB	45
Base cabinet with waste container XLGMA	46
Base cabinet with GN-slides XLGGN	46
Base cabinet as heated cabinet with folding doors XLGWF	47
Base cabinet as installation cabinet with folding door XLGIF	48
Base cabinet as installation cabinet with front panel XLGIB	49
Base cabinet as generator cabinet with front panel XLGGE	49
Low height refrigerated counter with refrigeration unit XLGKE-M	50
Low height refrigerated counter with installation compartement XLGKE-I	51
Surcharge base cabinet in hygiene execution H2	52
PALUX X-Line - Product Code base cabinets Hygiene XH	53
Base cabinet hygiene as frying cabinet for Fry Star XHFR	54
Base cabinet hygiene closed on three sides XHOS	55
Base cabinet hygiene open on both sides XHOS	56
Base cabinet hygiene with folding doors XHFT	57
Base cabinet hygiene with drawers XHSB	58
Base cabinet hygiene with waste container XHMA	59
PALUX X-Line - Product Code complete upper part of range	60
Complete upper part of range, form 01 XL01	61
Complete upper part of range, form 02 XL02	62
90_ Folding up / down of complete upper part of range	65
Complete upper part of range - options	65
Complete upper part of range - connection or preparation at factory	66
Complete upper part of range - superstructures	66
PALUX X-Line - Stated Dimensions	67
PALUX X-Line - Heat Emissions	70

Single-Pan Deep-Fat Fryer		Art. No.	Price EUR
Drop-in module		890980	
Dimensions (LxD):	390 x 640 mm	Direct heat emission:	0,72 kW
Connected load:	8,0 kW 400 V 3N	Latent heat emission:	5,60 kW
		Steam emission:	8,24 kg / h

- Pan dimension: 220 x 340 x 190 mm
- Pan content: 6,5 - 10 Ltr. max.
- Temperature: 100 - 180°C
- Included:
 - 1x Deep fat frying basket (271586)
 - 1x Cover
 - 1x Bread crumbs sieve (270679)
 - 1x Drainage valve (863262)



☞ Prices do not include complete upper part of range, base cabinet and feet

Single-Pan Deep-Fat Fryer with downwards drain		Art. No.	Price EUR
Drop-in module		890981	
Dimensions (LxD):	390 x 640 mm	Direct heat emission:	0,72 kW
Connected load:	8,0 kW 400 V 3N	Latent heat emission:	5,60 kW
		Steam emission:	8,24 kg / h

Compare with Art. No. 890980

☞ **Compatible base cabinets type XLGOS-U / XLGFT-U, see page 40 and 43**

☞ Prices do not include complete upper part of range, base cabinet and feet

Single-Pan Deep-Fat Fryer with fat-filter-pump system and downwards drain		Art. No.	Price EUR
Drop-in module with operating panel		890982	
Dimensions (LxD):	390 x 640 mm	Direct heat emission:	0,72 kW
Connected load:	8,0 kW 400 V 3N	Latent heat emission:	5,60 kW
		Steam emission:	8,24 kg / h

Compare with Art. No. 890980

☞ **Compatible base cabinets type XLGFT-UF, see page 43**

☞ Prices do not include complete upper part of range, base cabinet and feet

☞ **Further deep fryers as built-in module can be found in the PALUX Fry Star deep fryer price list**

Dual-Pan Deep-Fat Fryer		Art. No.	Price EUR
Drop-in module		890983	
Dimensions (LxD):	590 x 640 mm	Direct heat emission:	1,44 kW
Connected load:	2x 8,0 kW 400 V 3N	Latent heat emission:	11,20 kW
		Steam emission:	16,48 kg / h

- Pan dimension: 220 x 340 x 190 mm each
- Pan content: 6,5 - 10 Ltr. max.
- Temperature: 100 - 180°C each
- Included:
 - 2x Deep fat frying basket (271 586)
 - 2x Cover
 - 2x Bread crumbs sieve (270 679)
 - 2x Drainage valve (863 262)



☞ Prices do not include complete upper part of range, base cabinet and feet

Dual-Pan Deep-Fat Fryer with downwards drain		Art. No.	Price EUR
Drop-in module		890984	
Dimensions (LxD):	590 x 640 mm	Direct heat emission:	1,44 kW
Connected load:	2x 8,0 kW 400 V 3N	Latent heat emission:	11,20 kW
		Steam emission:	16,48 kg / h

Compare with Art. No. 890983

☞ **Compatible base cabinets type XLGOS-U / XLGFT-U, see page 40 and 43**

☞ Prices do not include complete upper part of range, base cabinet and feet

Dual-Pan Deep-Fat Fryer with fat-filter-pump system and downwards drain		Art. No.	Price EUR
Drop-in module		890985	
Dimensions (LxD):	590 x 640 mm	Direct heat emission:	1,44 kW
Connected load:	2x 8,0 kW 400 V 3N	Latent heat emission:	11,20 kW
		Steam emission:	16,48 kg / h

Compare with Art. No. 890983

☞ **Compatible base cabinets type XLGFT-UF, see page 43**

☞ Prices do not include complete upper part of range, base cabinet and feet

☞ **Further deep fat fryers as built-in module can be found in the PALUX Fry Star deep fat fryer price list**

Chip Scuttle GN 1/1		Art. No.	Price EUR
Drop-in module		890986	
Dimensions (LxD):	390 x 640 mm	Direct heat emission:	0,11 kW
Connected load:	0,85 kW 230 V 1N	Latent heat emission:	0,17 kW

Pan dimension: 308 x 509 x 140 mm
 Included: 1x Perforated GN 1/1 insert (864595)



☞ Prices do not include complete upper part of range, base cabinet and feet

Bain-Marie GN 1/1		Art. No.	Price EUR
Drop-in module		890988	
Dimensions (LxD):	390 x 640 mm	Direct heat emission:	0,125 kW
Connected load:	1,0 kW 230 V 1N	Latent heat emission:	0,20 kW
		Steam emission:	0,29 kg / h

Pan dimension: 308 x 509 x 220 mm
 Pan content: 30 Litre
 Temperature: 50 - 90°C
 Included: 1x Drain valve (863262)



☞ Prices do not include complete upper part of range, base cabinet and feet

Bain-Marie GN 1/1 with downwards drain		Art. No.	Price EUR
Drop-in module		890989	
Dimensions (LxD):	390 x 640 mm	Direct heat emission:	0,125 kW
Connected load:	1,0 kW 230 V 1N	Latent heat emission:	0,20 kW
		Steam emission:	0,29 kg / h

Compare with Art. No. 890988

☞ **Compatible base cabinets type XLGOS-UK, see page 40**

☞ Prices do not include complete upper part of range, base cabinet and feet

Cooker GN 1/1		Art. No.	Price EUR
Drop-in module		890990	
Dimensions (LxD):	390 x 640 mm	Direct heat emission:	0,75 kW
Connected load:	6,0 kW 400 V 3N	Latent heat emission:	1,20 kW
		Steam emission:	1,76 kg / h

Pan dimension: 308 x 509 x 220 mm
 Pan content: 30 Litre
 Temperature: 50 - 99°C
 Included: 1x Drain valve (863262)
 1x Perforated insert base (864544)



☞ Prices do not include complete upper part of range, base cabinet and feet

Cooker GN 1/1 with downwards drain		Art. No.	Price EUR
Drop-in module		890991	
Dimensions (LxD):	390 x 640 mm	Direct heat emission:	0,75 kW
Connected load:	6,0 kW 400 V 3N	Latent heat emission:	1,20 kW
		Steam emission:	1,76 kg / h

Compare with Art. No. 890990

☞ **Compatible base cabinets type XLGOS-UK, see page 40**

☞ Prices do not include complete upper part of range, base cabinet and feet

Pan 400		Art. No.	Price EUR
Drop-in module		890993	
Dimensions (LxD):	390 x 640 mm	Direct heat emission:	1,06 kW
Connected load:	4,0 kW 400 V 2N	Latent heat emission:	1,28 kW
		Steam emission:	1,88 kg / h

Pan dimension: 308 x 509 x 90 mm
 Pan content: 13 Litre
 Cooking surface: 308 x 509 mm
 Temperature: 100 - 250°C
 Heating zone: 1
 Drainage: 40 mm
 Included: 1x Drain plug(862 428)
 1x Safety-drain (866 520)
 1x Container (866 563)
 1x Cleaning scraper (864 021)



☞ Prices do not include complete upper part of range, base cabinet and feet

Pan 400 with downwards drain		Art. No.	Price EUR
Drop-in module		890994	
Dimensions (LxD):	390 x 640 mm	Direct heat emission:	1,06 kW
Connected load:	4,0 kW 400 V 2N	Latent heat emission:	1,28 kW
		Steam emission:	1,88 kg / h

Compare with Art. No. 890993

☞ **Compatible base cabinets type XLGOS-UB, see page 41**

☞ Prices do not include complete upper part of range, base cabinet and feet



Pan 600		Art. No.	Price EUR
Drop-in module		890996	
Dimensions (LxD):	590 x 640 mm	Direct heat emission:	2,12 kW
Connected load:	8,0 kW 400 V 3N	Latent heat emission:	2,56 kW
		Steam emission:	3,76 kg / h

- Pan dimension: 508 x 509 x 90 mm
- Pan content: 20 Litre
- Cooking surface: 508 x 509 mm
- Temperature: 100 - 250° C
- Heating zones: 2
- Drainage: 40 mm
- Included:
 - 1x Drain plug (862428)
 - 1x Safety-drain (866520)
 - 1x Container (866563)
 - 1x Cleaning scraper (864021)



☞ Prices do not include complete upper part of range, base cabinet and feet

Pan 600 with downwards drain		Art. No.	Price EUR
Drop-in module		890997	
Dimensions (LxD):	590 x 640 mm	Direct heat emission:	2,12 kW
Connected load:	8,0 kW 400 V 3N	Latent heat emission:	2,56 kW
		Steam emission:	3,76 kg / h

Compare with Art. No. 890996

☞ **Compatible base cabinets type XLGOS-UB, see page 41**

☞ Prices do not include complete upper part of range, base cabinet and feet



Griddle Plate 400		Art. No.	Price EUR
Drop-in module		890998	
Dimensions (LxD):	390 x 640 mm	Direct heat emission:	1,32 kW
Connected load:	4,0 kW 400 V 2N	Latent heat emission:	1,60 kW
		Steam emission:	2,35 kg / h

- Cooking surface: 308 x 509 mm
- Temperature: 100 - 250°C
- Heating zones: 1
- Drainage: 40 mm
- Included:
 - 1x Drain plug (867047)
 - 1x Safety-drain (866520)
 - 1x Container (866563)
 - 1x Cleaning scraper (864021)



☞ Prices do not include complete upper part of range, base cabinet and feet

Griddle Plate 400 with downwards drain		Art. No.	Price EUR
Drop-in module		890999	
Dimensions (LxD):	390 x 640 mm	Direct heat emission:	1,32 kW
Connected load:	4,0 kW 400 V 2N	Latent heat emission:	1,60 kW
		Steam emission:	2,35 kg / h

Compare with Art. No. 890998

☞ **Compatible base cabinets type XLGOS-UB, see page 41**

☞ Prices do not include complete upper part of range, base cabinet and feet



Griddle Plate 600		Art. No.	Price EUR
Drop-in module		891000	
Dimensions (LxD):	590 x 640 mm	Direct heat emission:	2,64 kW
Connected load:	8,0 kW 400 V 3N	Latent heat emission:	3,20 kW
		Steam emission:	4,70 kg / h

Cooking surface: 508 x 509 mm
 Temperature: 100 - 250°C
 Heating zones: 2
 Drainage: 40 mm
 Included:
 1x Drain plug (867047)
 1x Safety-drain (866520)
 1x Container (866563)
 1x Cleaning scraper (864021)



☞ Prices do not include complete upper part of range, base cabinet and feet

Griddle Plate 600 with downwards drain		Art. No.	Price EUR
Drop-in module		891001	
Dimensions (LxD):	590 x 640 mm	Direct heat emission:	2,64 kW
Connected load:	8,0 kW 400 V 3N	Latent heat emission:	3,20 kW
		Steam emission:	4,70 kg / h

Compare with Art. No. 891000

☞ **Compatible base cabinets type XLGOS-UB, see page 41**

☞ Prices do not include complete upper part of range, base cabinet and feet



Griddle Plate 800 S		Art. No.	Price EUR
Drop-in module		891003	
Dimensions (LxD):	790 x 640 mm	Direct heat emission:	2,77 kW
Connected load:	8,4 kW 400 V 3N	Latent heat emission:	3,36 kW
		Steam emission:	4,94 kg / h

- Steel plate made of special steel 1.2316
- Cooking surface: 704 x 506 mm
- Temperature: 100 - 250° C
- Heating zones: 2
- Drainage: 40 mm
- Included:
 - 1x Drain plug (867047)
 - 1x Safety-drain (866520)
 - 1x Container (866563)
 - 1x Cleaning scraper (864021)



☞ Prices do not include complete upper part of range, base cabinet and feet

Griddle Plate 800 S with downwards drain		Art. No.	Price EUR
Drop-in module		891004	
Dimensions (LxD):	790 x 640 mm	Direct heat emission:	2,77 kW
Connected load:	8,4 kW 400 V 3N	Latent heat emission:	3,36 kW
		Steam emission:	4,94 kg / h

Compare with Art. No. 891003

☞ **Compatible base cabinets type XLGOS-UB, see page 41**

☞ Prices do not include complete upper part of range, base cabinet and feet



Grill-/Griddle Plate 600		Art. No.	Price EUR
Drop-in module		891005	
Dimensions (LxD):	590 x 640 mm	Direct heat emission:	2,64 kW
Connected load:	8,0 kW 400 V 3	Latent heat emission:	3,20 kW
		Steam emission:	4,70 kg / h

- Steel plate made of special steel 1.2316
- Cooking surface: 508 x 509 mm
- Cooking surface 1/2 grill (left side) / 1/2 griddle (right side)
- Temperature: 100 - 250° C
- Heating zones: 2
- Drainage: 40 mm
- Included:
 - 1x Drain plug (867047)
 - 1x Safety-drain (866520)
 - 1x Container (866563)
 - 1x Cleaning scraper (864021)



☞ Prices do not include complete upper part of range, base cabinet and feet

Grill-/Griddle Plate 600 with downwards drain		Art. No.	Price EUR
Drop-in module		891006	
Dimensions (LxD):	590 x 640 mm	Direct heat emission:	2,64 kW
Connected load:	8,0 kW 400 V 3	Latent heat emission:	3,20 kW
		Steam emission:	4,70 kg / h

Compare with Art. No. 891005

☞ **Compatible base cabinets type XLGOS-UB, see page 41**

☞ Prices do not include complete upper part of range, base cabinet and feet



Steak Grill 400		Art. No.	Price EUR
Drop-in module		891007	
Dimensions (LxD):	390 x 640 mm	Direct heat emission:	1,19 kW
Connected load:	3,6 kW 230 V 1N	Latent heat emission:	1,44 kW
		Steam emission:	2,12 kg / h

- Grilling surface: 290 x 410 mm
- Grilling directly on the CNS-flat-heating elements
- Heating element in the basin can be swivelled
- Grilling temperature infinitely variable adjustable
- Fat collecting pan with drain plug - drain outlet to the front
- Heating zones: 1
- Included:
 - 1x Drain plug (869961)
 - 1x Safety-drain (866520)
 - 1x Container (866563)
 - 1x Cleaning scraper (864021)



☞ Prices do not include complete upper part of range, base cabinet and feet

Steak Grill 400 with downwards drain		Art. No.	Price EUR
Drop-in module		891009	
Dimensions (LxD):	390 x 640 mm	Direct heat emission:	1,19 kW
Connected load:	3,6 kW 230 V 1N	Latent heat emission:	1,44 kW
		Steam emission:	2,12 kg / h

Compare with Art. No. 891007

☞ **Compatible base cabinets type XLGOS-UB, see page 41**

☞ Prices do not include complete upper part of range, base cabinet and feet



Steak Grill 600		Art. No.	Price EUR
Drop-in module		891008	
Dimensions (LxD):	590 x 640 mm	Direct heat emission:	1,68 kW
Connected load:	5,0 kW 400 V 2N	Latent heat emission:	2,04 kW
		Steam emission:	3,00 kg / h

- Grilling surface: 490 x 410 mm
- Grilling directly on the CNS-flat-heating elements
- Heating element in the basin can be swivelled
- Grilling temperature infinitely variable adjustable
- Fat collecting pan with drain plug - drain outlet to the front
- Heating zones: 2
- Included:
 - 1x Drain plug (869961)
 - 1x Safety-drain (866520)
 - 1x Container (866563)
 - 1x Cleaning scraper (864021)



☞ Prices do not include complete upper part of range, base cabinet and feet

Steak Grill 600 with downwards drain		Art. No.	Price EUR
Drop-in module		891011	
Dimensions (LxD):	590 x 640 mm	Direct heat emission:	1,68 kW
Connected load:	5,0 kW 400 V 2N	Latent heat emission:	2,04 kW
		Steam emission:	3,00 kg / h

Compare with Art. No. 891008

☞ **Compatible base cabinets type XLGOS-UB, see page 41**

☞ Prices do not include complete upper part of range, base cabinet and feet



Steak Grill 800		Art. No.	Price EUR
Drop-in module		891012	
Dimensions (LxD):	790 x 640 mm	Direct heat emission:	2,44 kW
Connected load:	8,3 kW 400 V 3N	Latent heat emission:	2,95 kW
		Steam emission:	4,33 kg / h

- Grilling surface: 684 x 410 mm
- Grilling directly on the CNS-flat-heating elements
- Heating element in the basin can be swivelled
- Grilling temperature infinitely variable adjustable
- Fat collecting pan with drain plug - drain outlet to the front
- Heating zones: 2
- Included:
 - 1x Drain plug (869961)
 - 1x Safety-drain (866520)
 - 1x Container (866563)
 - 1x Cleaning scraper (864021)



☞ Prices do not include complete upper part of range, base cabinet and feet

Steak Grill 800 with downwards drain		Art. No.	Price EUR
Drop-in module		891013	
Dimensions (LxD):	790 x 640 mm	Direct heat emission:	2,44 kW
Connected load:	8,3 kW 400 V 3N	Latent heat emission:	2,95 kW
		Steam emission:	4,33 kg / h

Compare with Art. No. 891012

☞ **Compatible base cabinets type XLGOS-UB, see page 41**

☞ Prices do not include complete upper part of range, base cabinet and feet



Sausage Grill 600		Art. No.	Price EUR
Drop-in module		891014	
Dimensions (LxD):	590 x 640 mm	Direct heat emission:	2,70 kW
Connected load:	8,2 kW 400 V 3N	Latent heat emission:	3,30 kW
		Steam emission:	4,82 kg / h

Grid made of special cast iron
 Grilling surface: 470 x 500 mm
 Removable drawer
 Heating zones: 2 (left 3/5, right 2/5)



☞ Prices do not include complete upper part of range, base cabinet and feet

Ceramic Range 1		Art. No.	Price EUR
Drop-in module		891015	
Dimensions (LxD):	390 x 640 mm	Direct heat emission:	1,00 kW
Connected load:	5,0 kW 400 V 2N	Latent heat emission:	0,40 kW
		Steam emission:	0,59 kg / h

Ceramic hob: 350 x 600 mm
 2 heating zones: Ø 250 mm / 2,5 kW each
 Range of control: 1 - 3 continuously adjustable



☞ Prices do not include complete upper part of range, base cabinet and feet

2-Plate Electric Range		Art. No.	Price EUR
Drop-in module		891018	
Dimensions (LxD):	390 x 640 mm	Direct heat emission:	1,00 kW
Connected load:	5,2 kW 400 V 2N	Latent heat emission:	0,40 kW
		Steam emission:	0,59 kg / h

2 heating zones: 220 x 220 mm / 2,6 kW
 Range of control: 1 - 6 continuously adjustable



☞ Prices do not include complete upper part of range, base cabinet and feet

Electric Baking Oven GN 1 1/2		Art. No.	Price EUR
Drop-in module		958484	
Dimensions (LxDxH):	800 x 675 x 430 mm	Direct heat emission:	1,61 kW
Connected load:	4,6 kW 400 V 3N	Latent heat emission:	0,74 kW
		Steam emission:	1,08 kg / h

Interior dimensions of oven: 535 x 520 x 250 mm

Accessories included: 1 x enamelled baking tray GN 1 1/2 (649716)
 1 x CNS grate GN 1 1/2 (281131)



☞ Please contact your customer service for technical inspection and approval!

Induction Range 1		Art. No.	Price EUR
Drop-in module		891024	
Dimensions (LxD):	390 x 640 mm	Direct heat emission:	0,49 kW
Connected load:	7,0 kW 400 V 3	Latent heat emission:	0,20 kW
		Steam emission:	0,29 kg / h

Ceramic hob: 350 x 600 mm
 2 heating zones: Ø 220 mm / 3,5 kW each
 Range of Control: 1 - 8



☞ Take into consideration planning information PALUX X-Line Induction (page 6)

☞ Prices do not include complete upper part of range, base cabinet and feet

Induction Range 2		Art. No.	Price EUR
Drop-in module		891026	
Dimensions (LxD):	390 x 640 mm	Direct heat emission:	0,70 kW
Connected load:	10,0 kW 400 V 3	Latent heat emission:	0,28 kW
		Steam emission:	0,41 kg / h

Ceramic hob: 350 x 600 mm
 2 heating zones: Ø 220 mm / 5,0 kW each
 Range of Control: 1 - 8



☞ Take into consideration planning information PALUX X-Line Induction (page 6)

☞ Prices do not include complete upper part of range, base cabinet and feet

Induction Wok 1		Art. No.	Price EUR
Drop-in module		891034	
Dimensions (LxD):	390 x 640 mm	Direct heat emission:	0,14 kW
Connected load:	3,5 kW 230 V 1N	Latent heat emission:	0,06 kW
		Steam emission:	0,08 kg / h

Ceramic Wok: Ø 300 mm
 Range of Control: 1 - 8
 Included: 1x Wok-Pan Ø 360 mm (692859)



☞ Take into consideration planning information PALUX X-Line Induction (page 6)

☞ Prices do not include complete upper part of range, base cabinet and feet

Induction Wok 2		Art. No.	Price EUR
Drop-in module		891035	
Dimensions (LxD):	390 x 640 mm	Direct heat emission:	0,20 kW
Connected load:	5,0 kW 400 V 3	Latent heat emission:	0,08 kW
		Steam emission:	0,12 kg / h

Ceramic Wok: Ø 300 mm
 Range of Control: 1 - 8
 Included: 1x Wok-Pan Ø 360 mm (692859)



☞ Take into consideration planning information PALUX X-Line Induction (page 6)

☞ Prices do not include complete upper part of range, base cabinet and feet

Ceramic Range F1		Art. No.	Price EUR
Flush mounted module		891016	
Dimensions (LxD):	350 x 600 mm	Direct heat emission:	1,00 kW
Connected load:	5,0 kW 400 V 2N AC	Latent heat emission::	0,40 kW
		Steam emission:	0,59 kg / h

Ceramic hob: 350 x 600 mm
 Work top cut-out: 360 x 610 mm
 2 heating zones: Ø 250 mm / 2,5 kW each
 Range of control: 1 - 3 continuously adjustable



☞ Installation only at our factory - not usable as drop-in unit

☞ Prices do not include complete upper part of range, base cabinet and feet

Ceramic Range F3		Art. No.	Price EUR
Flush mounted module		891017	
Dimensions (LxD):	750 x 600 mm	Direct heat emission:	2,00 kW
Connected load:	2x 5,0 (10,0) kW 400 V 2N AC	Latent heat emission::	0,80 kW
		Steam emission:	1,18 kg / h

Ceramic hob: 750 x 600 mm
 Work top cut-out: 760 x 610 mm
 4 heating zones: Ø 250 mm / 2,5 kW each
 Range of control: 1 - 3 continuously adjustable



☞ Installation only at our factory - not usable as drop-in unit

☞ Prices do not include complete upper part of range, base cabinet and feet

Induction Range F		Art. No.	Price EUR
Flush mounted module		891019	
Dimensions (LxD):	360 x 360 mm	Direct heat emission:	0,35 kW
Connected load:	5,0 kW 400 V 3 AC	Latent heat emission::	0,14 kW
		Steam emission:	0,20 kg / h

Ceramic hob: 360 x 360 mm
 Work top cut-out: 367 x 367 mm
 1 heating zone: Ø 270 mm / 5,0 kW
 Range of control: 1 - 8



- ☞ Installation only at our factory - not usable as drop-in unit
- ☞ Take into consideration planning information PALUX X-Line Induction (page 6)
- ☞ Prices do not include complete upper part of range, base cabinet and feet

Induction hob 4Z		Art. No.	Price EUR
Flush mounted module		891023	
Dimensions (LxD):	500 x 500 mm	Direct heat emission:	1,12 kW
Connected load:	16,0 kW 400 V 3 AC	Latent heat emission::	0,45kW
		Steam emission:	0,66 kg / h

Inclusive 4 induction generators for generator cabinet
 Ceramic hob: 500 x 500 mm
 Work top cut-out: 507 x 507 mm
 4 heating zones with 4 coils each 210 x 210 mm / each 4,0 kW
 Range of control: 1 - 8



- ☞ Requires one base cabinet as generator cabinet (page 49)
- ☞ Installation only at our factory - not usable as drop-in unit
- ☞ Prices do not include complete upper part of range, base cabinet and feet

Induction Range F1		Art. No.	Price EUR
Flush mounted module		891025	
Dimensions (LxD):	350 x 600 mm	Direct heat emission:	0,49 kW
Connected load:	7,0 kW 400 V 3 AC	Latent heat emission::	0,20 kW
		Steam emission:	0,29 kg / h

Ceramic hob: 350 x 600 mm
 Work top cut-out: 360 x 610 mm
 2 heating zones: Ø 220 mm / 3,5 kW each
 Range of control: 1 - 8



- ☞ Installation only at our factory - not usable as drop-in unit
- ☞ Take into consideration planning information PALUX X-Line Induction (page 6)
- ☞ Prices do not include complete upper part of range, base cabinet and feet

Induction Range F2		Art. No.	Price EUR
Flush mounted module		891028	
Dimensions (LxD):	350 x 600 mm	Direct heat emission:	0,70 kW
Connected load:	10,0 kW 400 V 3 AC	Latent heat emission::	0,28 kW
		Steam emission:	0,41 kg / h

Ceramic hob: 350 x 600 mm
 Work top cut-out: 360 x 610 mm
 2 heating zones: Ø 220 mm / 5,0 kW each
 Range of control: 1 - 8



- ☞ Installation only at our factory - not usable as drop-in unit
- ☞ Take into consideration planning information PALUX X-Line Induction (page 6)
- ☞ Prices do not include complete upper part of range, base cabinet and feet

Induction Range F3		Art. No.	Price EUR
Flush mounted module		891032	
Dimensions (LxD):	750 x 600 mm	Direct heat emission:	0,98 kW
Connected load:	2x 7,0 (14,0) kW 400 V 3 AC	Latent heat emission::	0,40 kW
		Steam emission:	0,58 kg / h

Ceramic hob: 750 x 600 mm
 Work top cut-out: 760 x 610 mm
 4 heating zones: Ø 220 mm / 3,5 kW each
 Range of control: 1 - 8



- ☞ Installation only at our factory - not usable as drop-in unit
- ☞ Take into consideration planning information PALUX X-Line Induction (page 6)
- ☞ Prices do not include complete upper part of range, base cabinet and feet

Induction Range F4		Art. No.	Price EUR
Flush mounted module		891033	
Dimensions (LxD):	750 x 600 mm	Direct heat emission:	1,40 kW
Connected load:	2x 10,0 (20,0) kW 400 V 3 AC	Latent heat emission::	0,56 kW
		Steam emission:	0,82 kg / h

Ceramic hob: 750 x 600 mm
 Work top cut-out: 760 x 610 mm
 4 heating zones: Ø 220 mm / 5,0 kW each
 Range of control: 1 - 8



- ☞ Installation only at our factory - not usable as drop-in unit
- ☞ Take into consideration planning information PALUX X-Line Induction (page 6)
- ☞ Prices do not include complete upper part of range, base cabinet and feet

2-Burner Gas Range		Art. No.	Price EUR
Drop-in module CE Product-Identnumber 0085CN0056		891036	
Dimensions (LxD):	390 x 640 mm	Direct heat emission:	2,13 kW
Load:	8,5 kW natural gas E	Latent heat emission:	0,85 kW
		Steam emission:	1,25 kg / h

With stainless steel grid

Cooking surface: 350 x 600 mm

Heating zones: 1x 3,5 kW / 1x 5,0 kW

Nozzle kit for natural gas LL has to be ordered separately if required (no extra charge).

Nozzle kit for natural gas LL: Art. No. 869805



Planning hint:

☞ Open base cabinets must be planned for all gas appliances X-Line due to the incoming air

☞ Prices do not include complete upper part of range, base cabinet and feet

Gas Grill 600		Art. No.	Price EUR
Drop-in module CE Product-Identnumber 0085BR0418		891041	
Dimensions (LxD):	590 x 650 mm	Direct heat emission:	3,61 kW
Load:	10,3 kW natural gas E	Latent heat emission:	4,12 kW
		Steam emission:	6,06 kg / h

Grid made of special cast iron
 Grilling surface: 500 x 465 mm
 Removable drawer
 Heating zones: 2x 5,15 kW



Nozzle kit for natural gas LL has to be ordered separately if required (no extra charge).

Nozzle kit for natural gas LL: Art. No. 939749

Planning hint:

- ☞ Open base cabinets must be planned for all gas appliances X-Line due to the incoming air
- ☞ When planning a measure of length of 800 mm is required
- ☞ Prices do not include complete upper part of range, base cabinet and feet

Gas Grill 800		Art. No	Price EUR
Drop-in module CE Product-Identnumber 0085BR0418		891621	
Dimensions (LxDxH):	790 x 640 mm	Direct heat emission:	5,42 kW
Load:	15,4 kW natural gas E	Latent heat emission:	6,18 kW
		Steam emission:	9,09 kg / h

Grilling surface: 700 x 465mm
 Heating zones: 3 x 5,15 kW
 Removable grease trap/water drawer



Accessories included: 1 x Appliance connection (696439)

☞ Nozzle kit for natural gas LL has to be ordered separately if required (no extra charge).

Planning hint:

- ☞ Open base cabinets must be planned for all gas appliances X-Line due to the incoming air
- ☞ When planning a measure of length of 1000 mm is required
- ☞ Prices do not include complete upper part of range, base cabinet and feet

Gas Lava Stone Grill 600		Art. No.	Price EUR
Drop-in module CE Product-Identnumber 0085BR0418		891042	
Dimensions (LxD):	590 x 650 mm	Direct heat emission:	3,61 kW
Load:	10,3 kW natural gas E	Latent heat emission:	4,12 kW
		Steam emission:	6,06 kg / h

Grid made of stainless steel rods
 Grilling surface: 425 x 480 mm
 Removable drawer
 Heating zones: 2x 5,15 kW



Nozzle kit for natural gas LL has to be ordered separately if required (no extra charge).

Nozzle kit for natural gas LL: Art. No. 939749

Planning hint:

- ☞ Open base cabinets must be planned for all gas appliances X-Line due to the incoming air
- ☞ When planning a measure of length of 800 mm is required
- ☞ Prices do not include complete upper part of range, base cabinet and feet

Gas Lava Stone Grill 800		Art. No	Price EUR
Drop-in module CE Product-Identnumber 0085BR0418		891623	
Dimensions (LxDxH):	790 x 640 mm	Direct heat emission:	5,42 kW
Load:	15,4 kW natural gas E	Latent heat emission:	6,18 kW
		Steam emission:	9,09 kg / h

Grilling surface: 680 x 425 mm
 Heating zones: 3 x 5,15 kW
 Removable grease trap/water drawer



Accessories included: 1 x Appliance connection (696439)

☞ Nozzle kit for natural gas LL has to be ordered separately if required (no extra charge).

Planning hint:

- ☞ Open base cabinets must be planned for all gas appliances X-Line due to the incoming air
- ☞ When planning a measure of length of 1000 mm is required
- ☞ Prices do not include complete upper part of range, base cabinet and feet

Surcharge for brass-look of control knob	Art. No.	Price EUR
1 control knob in brass-look For appliance with 1 control knob	MP_K1_MESSING	
2 control knobs in brass-look For appliance with 2 control knobs	MP_K2_MESSING	
3 control knobs in brass-look For appliance with 3 control knobs	MP_K3_MESSING	
4 control knobs in brass-look For appliance with 4 control knobs	MP_K4_MESSING	




Surcharge module seamlessly welded into upper part of range	Art. No.	Price EUR
Built-in module welded into complete upper part of range	MP_G_EINSW	On request

Integration of third-party devices	Art. No.	Price EUR
Cut-out in upper part of range for installation of third-party units	VP617418	
Installation of third-party units into upper part of range	VP617419	
☞ Integration of third-party units only upon request!		

Accessories Deep Fat Fryer	Art. No.	Price EUR
Frying basket for Deep Fat Fryer Dimensions (LxDxH): 200 x 290 x 120 mm	271586	
1/2 Frying basket for Deep Fat Fryer Dimensions (LxDxH): 95 x 285 x 120 mm	275166	
Portion basket for Deep Fat Fryer Dimensions (LxDxH): 180 x 120 x 120 mm	374512	

Accessories Cooker	Art. No.	Price EUR
GN 1/3 container - 200 mm deep perforated on 4 sides and bottom Ø 4 mm, with folding handles	609935	
GN-P 1/3 container - 200 mm deep perforated Ø 3 mm (Rice), with folding handles	649732	
GN 1/2 container - 200 mm deep perforated on 4 sides and bottom Ø 4 mm, with folding handles	609862	
Pasta basket, round - Ø 170 mm	628042	
Pasta basket, round - Ø 135 mm	628050	
Perforated insert bottom	864544	

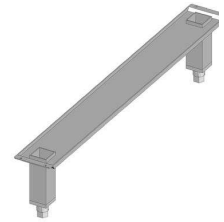
Accessories Pan / Griddle Plate / Steak Grill	Art. No.	Price EUR
Kit GN-supports (1 pair) for base cabinet for above mentioned appliances to insert GN-trays	922978	
GN 1/1 container - 200 mm deep with folding handles	607207	
GN 1/1 container - 100 mm deep with folding handles	609773	
Drain with shallow collecting container to be used, if installed above base cabinets with drawers or doors consisting of: - drain Art. No. 923567 - connecting plate Art. No. 923 540 - collecting container Art. No. 923 559	499692	-
Care emulsion	883277	
Splash guard for Pan 400 / Griddle Plate 400	864552	
Splash guard for Pan 600 / Griddle Plate 600	864560	
Splash guard for Griddle Plate 800 S	00574257	
Drain pipe made from stainless steel with fixation screw, diameter 40 mm, length 200 mm, height 110 mm To plug on drain	879883	
Cleaning scraper for Steak Grill	051144	
Spatula for Pan and Griddle Plate	647187	
 Abbildung Bratenwender (Best.-Nr. 647187)		

Accessories Ceramic Range / Induction Range	Art. No.	Price EUR
Ceramic griddle scraper	BI371732	
Spare blades for ceramic griddle scraper	BK179309	

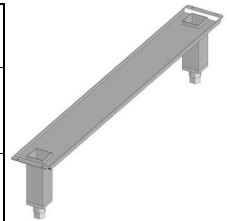
Accessories Induction Wok	Art. No.	Price EUR
Wok-Pan Ø 360 mm	692859	

Accessories gas drop-in modules	Art. No.	Price EUR
Flexible stainless steel hose W.1.4541 DN12, Length: 2000 mm	730327	
Flexible stainless steel hose W.1.4541 DN12, Length: 1000 mm	750638	

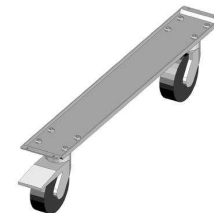
Installation versions for base cabinet XLG Depth 440 mm	Art. No.	Price EUR
Feet (2 pieces) on cross member, Height: 100 mm for working height 850 mm	300592	
Feet (2 pieces) on cross member, Height: 150 mm for working height 900 mm	300123	
Feet (2 pieces) on cross member, Height: 200 mm for working height 950 mm	300602	



Installation versions for base cabinet XLG Depth 640 mm	Art. No.	Price EUR
Feet (2 pieces) on cross member, Height: 100 mm for working height 850 mm	300597	
Feet (2 pieces) on cross member, Height: 150 mm for working height 900 mm	300121	
Feet (2 pieces) on cross member, Height: 200 mm for working height 950 mm	300604	
Castors (2 pieces) on cross member, 1 of them with locking break, Height 168 mm for working height 918 mm Can only be used for rows from 700 to 900 mm depth, under at least 2 base units. A mobile version is not possible for cooking units.	300609	



Installation versions for base cabinet XLG Depth 740 mm	Art. No.	Price EUR
Feet (2 pieces) on cross member, Height: 100 mm for working height 850 mm	300598	
Feet (2 pieces) on cross member, Height: 150 mm for working height 900 mm	300589	
Feet (2 pieces) on cross member, Height: 200 mm for working height 950 mm	300605	
Castors (2 pieces) on cross member, 1 of them with locking break, Height: 168 mm for working height 918 mm Can only be used for rows from 700 to 900 mm depth, under at least 2 base units. A mobile version is not possible for cooking units.	300610	

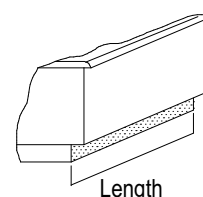


Installation versions for base cabinet XH, electric baking oven and refrigerated element XLG, Depth 675 / 740 / 940 mm	Art. No.	Price EUR
Foot (1 piece), Height: 100 mm for working height 850 mm	846864	
Foot (1 piece), Height: 150 mm for working height 900 mm	846872	
Foot (1 piece), Height: 200 mm for working height 950 mm	846880	
Foot (1 piece) for refrigerated element, Height: 100 mm for working height 850 mm	848336	
Foot (1 piece) for refrigerated element, Height: 150 mm for working height 900 mm	848344	
Foot (1 piece) for refrigerated element, Height: 200 mm for working height 950 mm	888236	



Optional feature - Mobile Base Cabinet	Art. No.	Price EUR
Optional feature "mobile", with steering rollers, for base cabinet of 600 mm length rollers-Ø 125 mm, rear panel and cable suspension included For working height 913 mm	ZMFLUG06	
Optional feature "mobile", with steering rollers, for base cabinet of 800 mm length rollers-Ø 125 mm, rear panel and cable suspension included For working height 913 mm	ZMFLUG08	
Optional feature "mobile", with steering rollers, for base cabinet of 1000 mm length rollers-Ø 125 mm, rear panel and cable suspension included For working height 913 mm	ZMFLUG10	
Optional feature "mobile", with steering rollers, for base cabinet of 1200 mm length rollers-Ø 125 mm, rear panel and cable suspension included For working height 913 mm	ZMFLUG12	

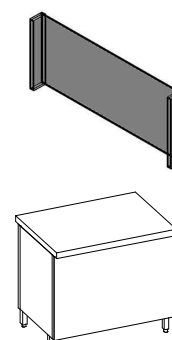
Plinth panel / Plinth frame	Art. No.	Price EUR
Plinth panel as visual protection, made of CNS 150 mm high (Installation not included) plinth panel only possible at wall assembly up to depth 900 mm of upper part of range.	EUSK	per running metre
Plinth frame Stainless steel 2,0 mm with reinforcing sections height 150 mm	EUSR	per running metre of the longest side



Side panel	Art. No.	Price EUR
Side panel for wall set-up for base cabinet BH Depth 740 mm (will be delivered if required according to the installation plan)	689904	-
Side panel for wall set-up for base cabinet BH Depth 940 mm (will be delivered if required according to the installation plan)	724904	-

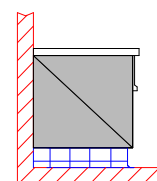
Rear Panel

Item	Art. No.	Price EUR
Rear panel; 430 mm height, for base cabinets XLG when installing line freely in the room Price per running metre	XLGRW	180,00
Rear panel; 700 mm height, when installing line freely in the room as alternative to second front panel of XL02-----73 resp. 83 Price per running metre	EURW	
Rear panel cut-out with edge protection for installations (e.g. water, electric)	EURWA	
Rear panel cut-out with removable lid for installations (e.g. water, electric)	EURWAD	
Removable lid for EURWA Dimensions (LxH) 300 x 480 mm	883041	



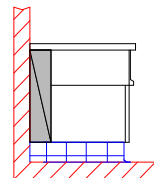
Side panel

Item	Art. No.	Price EUR
Side panel installing line freely in the room	730696	
Side panel for wall assembly left / depth 700 mm (Form XL01)	733954	
Side panel for wall assembly right / depth 700 mm (Form XL01)	729434	
Side panel for wall assembly left / depth 800 mm (Form XL01)	729892	
Side panel for wall assembly right / depth 800 mm (Form XL01)	730173	
Side panel for wall assembly left / depth 900 mm (Form XL01)	999999	
Side panel for wall assembly right / depth 900 mm (Form XL01)	999999	



Side cover

Item	Art. No.	Price EUR
Side cover EUBS1 50 x 700 mm For base cabinet 640 mm and upper part of range with 700 mm depth	957755	
Side cover EUBS2 150 x 700 mm For base cabinet 640 mm and upper part of range with 800 mm depth	881893	
Side cover EUBS3 250 x 700 mm For base cabinet 640 mm and upper part of range with 900 mm depth	999999	



Socket

Description	Art. No.	Price EUR
Schuko- socket 230 V incl. mounting, without wiring	EZSD23	
CEE-socket 230 V incl. mounting, without wiring	EZCE23	
CEE-socket 400 V incl. mounting, without wiring	EZCE40	
Data socket RJ45 Consisting of empty housing (889146) and 2xRJ45 socket outlet incl. mounting, without wiring	EZDS	



Splash Guard

Note for splash guard and partition wall: an installed splash guard / partition wall for deep fat fryers is according to DGUV 110-003 necessary for safety reasons if the distance between the deep fat fryer and water of any kind is less than 800 mm.

Item	Art. No.	Product code	Price EUR
Splash guard - for mounting on worktop and wall - bevelled of front side			
Dimensions: 2 x 570 x 350 mm	878653	SS-ECO-570	
Dimensions: 2 x 670 x 350 mm	878654	SS-ECO-670	
Dimensions: 2 x 770 x 350 mm	878655	SS-ECO-770	



Item	Art. No.	Product code	Price EUR
Splash guard - for mounting on worktop - bevelled of front and rear side			
Dimensions: 2 x 650 x 350 mm	878661	SS-TG-650	
Dimensions: 2 x 750 x 350 mm	879326	SS-TG-750	



Partition wall

Note for splash guard and partition wall: an installed splash guard / partition wall for deep fat fryers is according to DGUV 110-003 necessary for safety reasons if the distance between the deep fat fryer and water of any kind is less than 800 mm.

Item	Art. No.	Product code	Price EUR
Partition wall - for mounting on worktop and wall - bevelled of front side			
Dimensions: 20 x 570 x 350 mm	878656	TW-ECO-570	
Dimensions: 20 x 670 x 350 mm	878657	TW-ECO-670	
Dimensions: 20 x 770 x 350 mm	878658	TW-ECO-770	

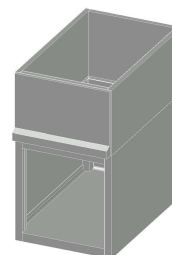


Type			Function		Length		Corpus		Version
1	2	3	4	5	6	7	8	9	10
XLG = Base cabinet			OS= Closed on three sides FT= Folding door(s) SB= Drawer(s) MA= Waste container GN= GN-slides WF= Heated cabinet IF= Installation cabinet with folding door IB= Installation cabinet with front panel GE= Generator cabinet with front panel KE= Refrigerated element		02= 200 mm 04= 400 mm 06= 600 mm 08= 800 mm 10= 1000 mm 12= 1200 mm		<u>Depth</u> 44= 440 mm 64= 640 mm 74= 740 mm		I= ventilation crossbeam U= Cut-out in base cabinet UB= Pan / Griddle Plate / Steak Grill UF= fat-filter-pump system UK= Cooker / Bain-Marie <u>Door hinging</u> L= hinged on left side R= hinged on right side <u>Drawer combination</u> 1= 1 drawer Height 200 mm 2= 2 drawers Height 150/150 mm



Base cabinet closed on three sides XLGOS

- Base cabinet with installation frame as self-supporting structure, for installation of PALUX X-Line appliances
- Flat bottom
- Intermediate shelf for the protection of electric components
- Cut-out in rear panel for electric connection
- Basic hygiene version: interior of cabinet absolutely smooth
- Made from stainless steel 1.4301
- Base cabinet height 430 mm / total height 700 mm



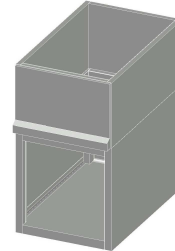
	Depth 440 mm			
Length	Art. No.	Product Code	Interior dimensions (LxDxH)	Price EUR
400 mm	891336	XLGOS0444	342 x 439 x 353 mm	
600 mm	891337	XLGOS0644	542 x 439 x 353 mm	
800 mm	891338	XLGOS0844	742 x 439 x 353 mm	
1000 mm	891340	XLGOS1044	942 x 439 x 353 mm	
1200 mm	891341	XLGOS1244	1142 x 439 x 353 mm	

	Depth 640 mm			
Length	Art. No.	Product Code	Interior dimensions (LxDxH)	Price EUR
400 mm	390124	XLGOS0464	342 x 639 x 353 mm	
600 mm	390125	XLGOS0664	542 x 639 x 353 mm	
800 mm	390126	XLGOS0864	742 x 639 x 353 mm	
1000 mm	390128	XLGOS1064	942 x 639 x 353 mm	
1200 mm	390129	XLGOS1264	1142 x 639 x 353 mm	

Prices do not include feet.

Base cabinet closed on three sides for X-Line Deep Fat Fryers XLGOS-U

- Base cabinet closed on three sides for X-Line Deep Fat Fryers with downwards drain
- Otherwise like XLGOS



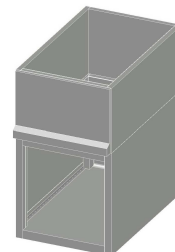
For X-Line Single-Pan Deep Fat Fryer with downwards drain			
	Depth 640 mm		
Length	Art. No.	Product Code	Price EUR
400 mm	391424	XLGOS0464U	

For X-Line Dual-Pan Deep Fat Fryer with downwards drain			
	Depth 640 mm		
Length	Art. No.	Product Code	Price EUR
600 mm	391430	XLGOS0664U	

Prices do not include feet.

Base cabinet closed on three sides for X-Line Cooker / Bain-Marie XLGOS-UK

- Base cabinet for X-Line Cooker with downwards drain
- Base cabinet for X-Line Bain-Marie with downwards drain
- Otherwise like XLGOS

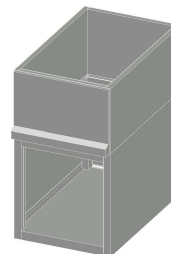


For X-Line Single-Pan Deep Cooker / Bain-Marie with downwards drain			
	Depth 640 mm		
Length	Art. No.	Product Code	Price EUR
400 mm	391749	XLGOS0464UK	

Prices do not include feet.

Base cabinet closed on three sides for X-Line Pan / Griddle Plate / Grill-/Griddle Plate / Steak Grill XLGOS-UB

- Base cabinet for X-Line Pan with downwards drain
- Base cabinet for X-Line Griddle Plate with downwards drain
- Base cabinet for X-Line Grill-/Griddle Plate with downwards drain
- Base cabinet for X-Line Steak Grill with downwards drain
- Otherwise like XLGOS

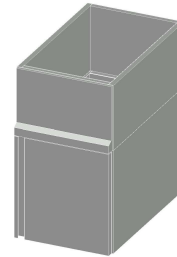


For X-Line Pan / Griddle Plate / Grill-/Griddle Plate / Steak Grill with downwards drain			
	Depth 640 mm		
Length	Art. No.	Product Code	Price EUR
400 mm	391436	XLGOS0464UB	
600 mm	391437	XLGOS0664UB	
800 mm	391803	XLGOS0864UB	

Prices do not include feet.

Base cabinet with folding door(s) XLGFT

- Base cabinet with installation frame as self-supporting structure, for installation of PALUX X-Line appliances
- Cabiner closed, with 1 or 2 double-walled folding doors
- Flat bottom
- Middle bottom for protection of electric components
- Cut-out in rear panel for electric connection
- Folding door with magnetic latch and integrated vertical handle
- Integrated vertical handle
- Basic hygiene version: interior of cabinet absolutely smooth
- Made from stainless steel 1.4301
- Base cabinet height 430 mm / total height 700 mm



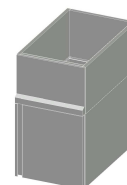
Depth 440 mm				
Length	Art. No.	Product Code	Number of doors / door hinging	Price EUR
400 mm	891348	XLGFT0444L	1 / left	
400 mm	891349	XLGFT0444R	1 / right	
600 mm	891350	XLGFT0644L	1 / left	
600 mm	891351	XLGFT0644R	1 / right	
800 mm	891352	XLGFT0844	2 / left + right	

Depth 640 mm				
Length	Art. No.	Product Code	Number of doors / door hinging	Price EUR
400 mm	390287	XLGFT0464L	1 / left	
400 mm	390288	XLGFT0464R	1 / right	
600 mm	390289	XLGFT0664L	1 / left	
600 mm	390290	XLGFT0664R	1 / right	
800 mm	390292	XLGFT0864	2 / left + right	

Prices do not include feet.

Base cabinet with folding door for X-Line Deep Fat Fryers XLGFT-U

- Base cabinet with folding door for X-Line Deep Fat Fryers with drain downwards
- Otherwise like XLGFT



For X-Line Single-Pan Deep Fat Fryer with downwards drain				
Depth 640 mm				
Length	Art. No.	Product Code	Number of doors / door hinging	Price EUR
400 mm	391426	XLGFT0464LU	1 / left	
400 mm	391427	XLGFT0464RU	1 / right	
For X-Line Dual-Pan Deep Fat Fryer with downwards drain				
Depth 640 mm				
Length	Art. No.	Product Code	Number of doors / door hinging	Price EUR
600 mm	391431	XLGFT0664LU	1 / left	
600 mm	391432	XLGFT0664RU	1 / right	

Prices do not include feet.

Base cabinet with folding door for X-Line Deep Fat Fryers XLGFT-UF

- Base cabinet with folding door for X-Line Deep Fat Fryers with downwards drain and fat-filter-pump system
- Otherwise like XLGFT



For X-Line Single-Pan Deep Fat Fryer with downwards drain and fat-filter-pump system				
Depth 640 mm				
Length	Art. No.	Product Code	Number of doors / door hinging	Price EUR
400 mm	391428	XLGFT0464LUF	1 / left	
400 mm	391429	XLGFT0464RUF	1 / right	
For X-Line Dual-Pan Deep Fat Fryer with downwards drain and fat-filter-pump system				
Depth 640 mm				
Length	Art. No.	Product Code	Number of doors / door hinging	Price EUR
600 mm	391434	XLGFT0664LUF	1 / left	
600 mm	391435	XLGFT0664RUF	1 / right	

Prices do not include feet.

Base cabinet with folding door for X-Line Induction XLGFT-I

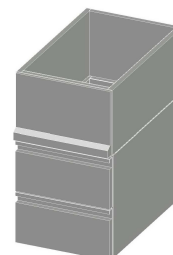
- Base cabinet with folding door for X-Line induction range and induction wok
- Closed on four sides, front with double-walled folding door and ventilation crossbeam
- Ohterwise like XLGFT

Depth 640 mm				
Length	Art. No.	Product Code	Number of doors / door hinging	Price EUR
400 mm	391771	XLGFT0464LI	1 / left	
400 mm	391772	XLGFT0464RI	1 / right	
600 mm	391773	XLGFT0664LI	1 / left	
600 mm	391774	XLGFT0664RI	1 / right	
800 mm	892622	XLGFT0864LRI	2 / left/ right	

Prices do not include feet.

Base cabinet with drawers XLGSB

- Base cabinet with installation frame as self-supporting structure, for installation of PALUX X-Line appliances
- Box-type drawers with stainless steel telescopic rails on ball bearings
- Intermediate shelf for the protection of electric components
- Cut-out in rear panel for electric connection
- Integrated horizontal handle
- Drawers with radius at the front and the rear
- Basic hygiene version: interior of cabinet is absolutely flat, without any sticking-out edges
- Made from stainless steel 1.4301
- Base cabinet height 430 mm / total height 700 mm



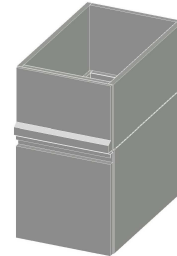
Depth 440 mm				
Length	Art. No.	Product Code	Number of drawers / depth of drawers	Price EUR
400 mm	891342	XLGSB04441	1 / 200 mm	
400 mm	891343	XLGSB04442	2 / 150 + 150 mm	
600 mm	891344	XLGSB06441	1 / 200 mm	
600 mm	891345	XLGSB06442	2 / 150 + 150 mm	

Depth 640 mm				
Length	Art. No.	Product Code	Number of drawers / depth of drawers	Price EUR
400 mm	390353	XLGSB04641	1 / 200 mm	
400 mm	390354	XLGSB04642	2 / 150 + 150 mm	
600 mm	390355	XLGSB06641	1 / 200 mm	
600 mm	390357	XLGSB06642	2 / 150 + 150 mm	

Prices do not include feet.

Base cabinet with waste container XLGMA

- Base cabinet with installation frame as self-supporting structure, for installation of PALUX X-Line appliances
- Waste drawer on stainless steel telescopic rails on ball bearings
- Intermediate shelf for the protection of electric components
- Cut-out in rear panel for electric connection
- Integrated horizontal handle
- Basic hygiene version: interior of cabinet absolutely smooth
- Made from stainless steel 1.4301
- Base cabinet height 430 mm / total height 700 mm



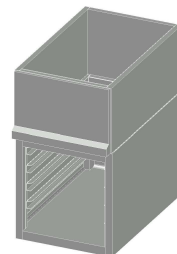
Depth 440 mm				
Length	Art. No.	Product Code	Number of plastic containers	Price EUR
400 mm	891346	XLGMA0444	1 pcs. (13,2 litres, Art. No. 892278)	

Depth 640 mm				
Length	Art. No.	Product Code	Number of plastic containers	Price EUR
400 mm	390521	XLGMA0464	2 pcs. (each 13,2 litres, Art. No. 892278)	
600 mm	390522	XLGMA0664	3 pcs. (each 13,2 litres, Art. No. 892278)	

Prices do not include feet.

Base cabinet with GN-slides XLGGN

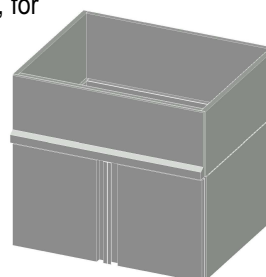
- Base cabinet with installation frame as self-supporting structure, for installation of PALUX X-Line appliances
- Closed on three sides, for GN 1/1 containers and trays
- Front cover with cut-out for operating panel
- Cut-out in rear panel for electric connection
- Basic hygiene version: interior of cabinet absolutely smooth
- Made from stainless steel 1.4301
- Height 700 mm



Depth 640 mm				
Length	Art. No.	Product Code	Number of slides / Spacing	Price EUR
400 mm	391519	XLGGN0464	4 / 75 mm	
600 mm	391941	XLGGN0664	4 / 75 mm	

Base cabinet as heated cabinet with folding doors XLGWF

- Base cabinet with installation frame as self-supporting structure with insulation, for installation of PALUX X-Line appliances
- Closed on four sides, with 2 double-walled folding doors
- Heated cabinet, heated by circulating air for even distribution of temperature, temperature up to 70° C, thermostatic control
- Shelf perforated for air-ventilation
- Middle bottom for protection of electric components
- Cut-out in rear panel for electric connection
- Folding door with magnetic door latch and integrated vertical handle
- Basic hygiene version: interior of cabinet absolutely smooth
- Made from stainless steel 1.4301
- Base cabinet height 430 mm / total height 700 mm



☞ **Heated base cabinets can not be installed underneath induction units**

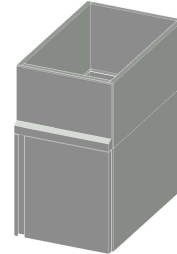
Depth 640 mm - onesided					
Length	Art. No.	Product Code	Connected load	Number of doors / door hinging	Price EUR
800 mm	390676	XLGWF0864	1,5 kW 230 V 1N	2 / left + right	

Depth 740 mm - doublesided					
Length	Art. No.	Product Code	Connected load	Number of doors / door hinging	Price EUR
800 mm	390684	XLGWF0874B	1,5 kW 230 V 1N	2 / left + right	

Prices do not include feet.

Base cabinet as installation cabinet with folding door XLGIF

- Base cabinet with installation frame as self-supporting structure, for installation of PALUX X-Line appliances
- Closed on four sides, at front with a double-walled folding door
- Installation compartement without floor shelf and rear wall
- Installation compartement 440 without partition wall, hinged door with door lock
- Installation compartement 640 with partition wall, hinged door without door lock
- Removable intermediate wall
- Made from stainless steel 1.4301
- Base cabinet height 430 mm / total height 700 mm



⚠ The installation compartments / subdistributions are not allowed to be located directly to ovens, heating cabinets or other heat sources.

Depth 440 mm				
Length	Art. No.	Product Code	Number of doors / door hinging	Price EUR
400 mm	891354	XLGIF0444L	1 / left	
400 mm	891356	XLGIF0444R	1 / right	
600 mm	891357	XLGIF0644L	1 / left	
600 mm	891358	XLGIF0644R	1 / right	

Depth 640 mm				
Length	Art. No.	Product Code	Number of doors / door hinging	Price EUR
400 mm	390480	XLGIF0464L	1 / left	
400 mm	390481	XLGIF0464R	1 / right	
600 mm	390482	XLGIF0664L	1 / left	
600 mm	390483	XLGIF0664R	1 / right	

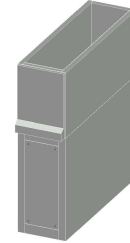
Desciption	Art. No.	Price EUR
Terminal box Dimensions (LxDxH): 300 x 300 x 130 mm for 9 cables	909548	
Additional price for folding door lockable with cylinder lock Additional price per folding door	EUSS	



Prices do not include feet.

Base cabinet as installation cabinet with front panel XLGIB

- Base cabinet with installation frame as self-supporting structure, for installation of PALUX X-Line appliances
- Closed on four sides with a removable front panel
- Installation compartment without floor shelf and rear wall
- Intermediate floor for the protection of electric components
- Made from stainless steel 1.4301
- Base cabinet height 430 mm / total height 700 mm



☞ The installation compartments / subdistributions are not allowed to be located directly to ovens, heating cabinets or other heat sources.

☞ Integration of terminal box (Art. No. 909548) is not possible.

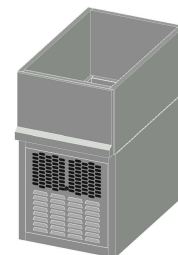
Depth 440 mm			
Length	Art. No.	Product Code	Price EUR
200 mm	891353	XLGIB0244	

Depth 640 mm			
Length	Art. No.	Product Code	Price EUR
200 mm	390479	XLGIB0200	

Prices do not include feet.

Base cabinet as generator cabinet with front panel XLGGE

- Base cabinet with installation frame as self-supporting structure, for installation of PALUX X-Line appliances
- Closed on four sides with removable front panel
- Generator cabinet with sufficient air flow
- Air intake in the substructure with removable air filter
- Air outlet in front of the generator cabinet
- Made from stainless steel 1.4301
- Base cabinet height 430 mm / total height 700 mm

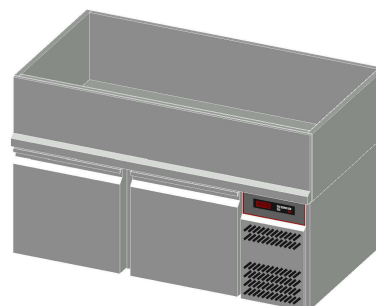


Depth 740 mm				
Length	Art. No.	Product Code	Number of generators	Price EUR
400 mm	892813	XLGGE0474	Up to 4 generators	

Prices do not include feet.

Low height refrigerated counter with refrigeration unit XLGKE-M

- Low height refrigerated counter, for installation of PALUX X-Line appliances
- Installation frame as self-supporting structure
- Refrigeration unit on right side
- Circulating air refrigeration, temperature range -2 to +10° C
- CFC-free, 50 mm PU insulation
- Interior: hygiene version with deep drawn floor shelf
- Evaporator, foam-integrated into stainless steel rear wall with integrated drain channel
- Doors / drawers with integrated handle
- Drawers inside with radius at the front and at the rear
- Drawers for GN - container, 100 / 100 mm Depth
- Electronic thermostat and digital thermometer
- HACCP monitoring system
- Automatic defrost and condensation of defrost water
- Accessories: 1 grill rilsan coated GN 1/1 for each door
- Base cabinet height 430 mm / total height 700 mm



☞ Rear panel is necessary for free-standing installation.

Gross contents: 145 Liter
Refrigeration capacity: 255 W at -15° C ET / +32° C AT/ R134a
Refrigerants: R290
Connected load: 350 W 230 V 50 Hz
Consumption: 1,40 kWh / 24 h

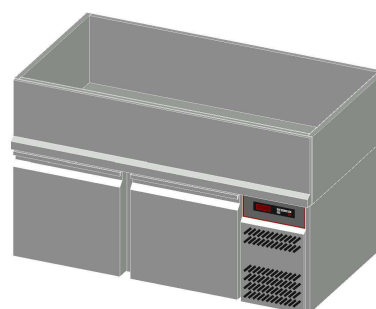
Depth 675 mm				
Length	Art. No.	Number of doors / drawers	Usable volume	Price EUR
1200 mm	XLGKE12M11 ¹⁾	2 doors	96 l	
1200 mm	XLGKE12M22 ¹⁾	2 x 2 drawers	79 l	

¹⁾ energy efficiency class B.

Prices do not include feet.

Low height refrigerated counter with installation compartement XLGKE-I

- Low height refrigerated counter for installation of PALUX X-Line appliances
- Installation frame as self-supporting structure
- Installation compartement on right side
- Circulating air refrigeration, temperature range -2 to +10° C
- CFC-free, 50 mm PU insulation
- Interior: hygiene version with deep-drawn floor shelf
- Evaporator, foam-integrated into stainless steel rear wall with integrated drain channel
- Doors / drawers with integrated handle
- Drawers inside with radius at the front and at the rear
- Drawers for GN - container, 100 / 100 mm depth
- Electronic thermostat and digital thermometer
- HACCP monitoring system
- Automatic defrost diameter; drain= 16 mm
- Accessories: 1 rilsan coated GN 1/1 per door
- Without expansion valve
- Base cabinet height 430 mm / total height 700 mm



☞ Rear panel is necessary for free-standing installation.

Gross contents: 145 Liter
Refrigeration capacity: 200 W at -15° C ET / +32° C AT
Connected load: 80 W 230 V 50 Hz

Depth 675 mm				
Length	Art. No.	Number of doors / drawers	Usable volume	Price EUR
1200 mm	XLGKE12111	2 doors	96 l	
1200 mm	XLGKE12122	2 x 2 drawers	79 l	

Prices do not include feet.

Surcharge base cabinet in hygiene execution H2

- Surcharge for base cabinet with folding door XLGFT
- Surcharge for base cabinet with drawers XLGSB
- Surcharge for base cabinet with GN-slides XLGGN

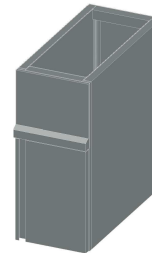
Depth 640 mm			
Length	Art. No.	Description	Price EUR
400 mm	BPG04H2	Surcharge base cabinet in hygiene execution H2	
600 mm	BPG06H2	Surcharge base cabinet in hygiene execution H2	
800 mm	BPG08H2	Surcharge base cabinet in hygiene execution H2	
1000 mm	BPG10H2	Surcharge base cabinet in hygiene execution H2	
1200 mm	BPG12H2	Surcharge base cabinet in hygiene execution H2	

Type		Function		Length		Corpus	Version
1	2	3	4	5	6	7	8
XH= Base cabinet X-Line Hygiene		FR= Deep Fat Fryers Fry Star OS= Open on both sides FT= Folding door(s) SB= Drawer(s) MA= Waste container		03= 300 mm 04= 400 mm 05= 500 mm 06= 600 mm 08= 800 mm 10= 1000 mm 12= 1200 mm		2= 640 mm 4= 740 mm 5= 940 mm 6= 440 mm	<u>Door hinging</u> L= hinged on left side R= hinged on right side <u>Drawer combinations</u> 2= 2 drawers Depth 150/150 mm



Base cabinet hygiene as frying cabinet for Fry Star XHFR

- Base cabinet with installation frame as self-supporting structure, for installation of PALUX Fry Star Deep Fat Fryers
 - Front cover with cut-out for operating panel
 - Double-walled folding door
 - Flat bottom
 - Intermediate shelf for the protection of electric components
 - Folding door with magnetic door latch and integrated vertical handle
 - Hygiene version H2:
bottom and side panels welded, seamless, radius R19 around the bottom
 - End side panels double-walled when there is no base cabinet next to it
 - Made from stainless steel 1.4301
 - Base cabinet height 430 mm / total height 700 mm
-
- Fry Star version AE 200 mm = Base cabinet length 300 mm
 - Fry Star version BE 300 mm = Base cabinet length 400 mm
 - Fry Star version CE 400 mm = Base cabinet length 500 mm
 - Fry Star version DE 400 mm = Base cabinet length 500 mm

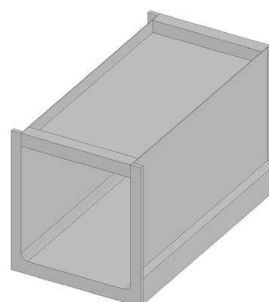


	Depth 640 mm			
Length	Art. No.	Product Code	Number of doors / door hinging	Preis EUR
300 mm	890552	XHFR032R	1 / right	
300 mm	890554	XHFR032L	1 / left	
400 mm	890555	XHFR042R	1 / right	
400 mm	890556	XHFR042L	1 / left	
500 mm	890557	XHFR052R	1 / right	
500 mm	890558	XHFR052L	1 / left	

Prices do not include feet.

Base cabinet hygiene closed on three sides XHOS

- Base cabinet with installation frame as self-supporting construction, for installation of PALUX X-Line appliances
- Front cover with cut-out for operating panel
- Flat bottom
- Intermediate shelf for the protection of electric components
- Hygiene version H2:
bottom and side panels welded, seamless, radius R19 around the bottom
- End side panels double-walled when there is no base cabinet next to it
- Made from stainless steel 1.4301
- Base cabinet height 430 mm / total height 700 mm



Depth 440 mm

Length	Art. No.	Product Code	Interior dimensions (LxDxH)	Price EUR
400 mm	892371	XHOS046	336 x 429 x 350 mm	
600 mm	892372	XHOS066	536 x 429 x 350 mm	
800 mm	892373	XHOS086	736 x 429 x 350 mm	
1000 mm	892374	XHOS106	936 x 429 x 350 mm	
1200 mm	892375	XHOS126	1136 x 429 x 350 mm	

Depth 640 mm

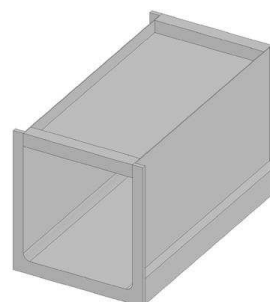
Length	Art. No.	Product Code	Interior dimensions (LxDxH)	Price EUR
400 mm	892366	XHOS042	336 x 629 x 350 mm	
600 mm	892367	XHOS062	536 x 629 x 350 mm	
800 mm	892368	XHOS082	736 x 629 x 350 mm	
1000 mm	892369	XHOS102	936 x 629 x 350 mm	
1200 mm	892370	XHOS122	1136 x 629 x 350 mm	

Prices do not include feet.

☞ Side covers are delivered if requested.

Base cabinet hygiene open on both sides XHOS

- Base cabinet with installation frame as self-supporting construction, for installation of PALUX X-Line appliances
- Front cover with cut-out for operating panel
- Flat bottom
- Intermediate shelf for the protection of electric components
- Hygiene version H2:
bottom and side panels welded, seamless, radius R19 around the bottom
- End side panels double-walled when there is no base cabinet next to it
- Made from stainless steel 1.4301
- Base cabinet height 430 mm / total height 700 mm



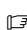
Depth 740 mm for complete upper part of range with depth 838 mm

Length	Art. No.	Product Code	Interior dimensions (LxDxH)	Price EUR
400 mm	662828	XHOS044	336 x 740 x 350 mm	
600 mm	662860	XHOS064	536 x 740 x 350 mm	
800 mm	664111	XHOS084	736 x 740 x 350 mm	
1000 mm	665606	XHOS104	936 x 740 x 350 mm	
1200 mm	687782	XHOS124	1136 x 740 x 350 mm	

Depth 940 mm for complete upper part of range with depth 1038 mm

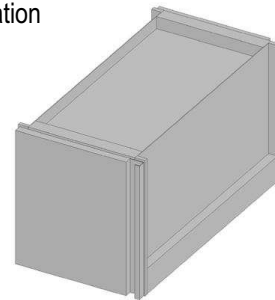
Length	Art. No.	Product Code	Interior dimensions (LxDxH)	Price EUR
400 mm	692700	XHOS045	336 x 940 x 350 mm	
600 mm	695394	XHOS065	536 x 940 x 350 mm	
800 mm	699993	XHOS085	736 x 940 x 350 mm	
1000 mm	709425	XHOS105	936 x 940 x 350 mm	
1200 mm	723258	XHOS125	1136 x 940 x 350 mm	

Prices do not include feet.

 Side covers are delivered if requested.

Base cabinet hygiene with folding doors XHFT

- Base cabinet with installation frame as self-supporting construction, for installation of PALUX X-Line appliances
- Cabinet closed, with 1 or 2 double-walled folding doors
- Front cover with cut-out for operating panel
- Flat bottom
- Intermediate shelf for the protection of electric components
- Folding door with magnetic door latch and integrated vertical handle
- Hygiene version H2:
bottom and side panels welded, seamless, radius R19 around the bottom
- End side panels double-walled when there is no base cabinet next to it
- Made from stainless steel 1.4301
- Base cabinet height 430 mm / total height 700 mm



Depth 740 mm for complete upper part of range with depth 838 mm

Length	Art. No.	Product Code	Number of doors / door hinging	Price EUR
400 mm	923478	XHFT044LR	1 / left + right	
600 mm	923486	XHFT064LR	1 / left + right	
800 mm	923494	XHFT084	2 / left + right	

Depth 940 mm for complete upper part of range with depth 1038 mm

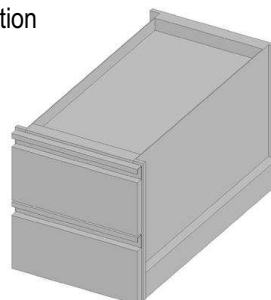
Length	Art. No.	Product Code	Number of doors / door hinging	Price EUR
400 mm	924261	XHFT045LR	1 / left + right	
600 mm	924288	XHFT065LR	1 / left + right	
800 mm	924296	XHFT085	2 / left + right	

Prices do not include feet.

☞ Side covers are delivered if requested.

Base cabinet hygiene with drawers XHSB

- Base cabinet with installation frame as self-supporting construction, for installation of PALUX X-Line appliances
- Box-type drawers with stainless steel full pull-out unit on ball bearing
- Front cover with cut-out for operating panel
- Intermediate shelf for the protection of electric components
- Integrated horizontal handle
- Drawers with radius at the front and the rear (inside)
- Hygiene version H2:
bottom and side panels welded, seamless, radius R19 around the bottom
- End side panels double-walled when there is no base cabinet next to it
- Made from stainless steel 1.4301
- Base cabinet height 430 mm / total height 700 mm



Depth 740 mm for complete upper part of range with depth 838 mm

Length	Art. No.	Product Code	Number of drawers / depth of drawers	Price EUR
400 mm	923516	XHSB0442	2 / 150 + 150 mm	
600 mm	923524	XHSB0642	2 / 150 + 150 mm	

Depth 940 mm for complete upper part of rang with depth 1038 mm

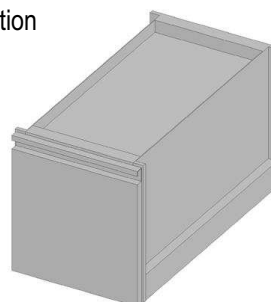
Length	Art. No.	Product Code	Number of drawers / depth of drawers	Price EUR
400 mm	924334	XHSB0452	2 / 150 + 150 mm	
600 mm	924342	XHSB0652	2 / 150 + 150 mm	

Prices do not include feet.

☞ Side covers are delivered if requested.

Base cabinet hygiene with waste container XHMA

- Base cabinet with installation frame as self-supporting construction, for installation of PALUX X-Line appliances
- Waste container with stainless steel telescopic rails on ball bearings
- Front cover with cut-out for operating panel
- Intermediate shelf for the protection of electric components
- Integrated horizontal handle
- Hygiene version H2:
bottom and side panels welded, seamless, radius R19 around the bottom
- End side panels double-walled when there is no base cabinet next to it
- Made from stainless steel 1.4301
- Base cabinet height 430 mm / total height 700 mm



Depth 740 mm for complete upper part of range with depth 838 mm

Length	Art. No.	Product Code	Number of Plastic Container	Price EUR
400 mm	878206	XHMA044	3 pieces (13,2 litres each, Art. No. 892278)	

Depth 940 mm for complete upper part of range with depth 838 mm

Length	Art. No.	Product Code	Number of Plastic Container	Price EUR
400 mm	878207	XHMA045	3 pieces (13,2 litres each, Art. No. 892278)	

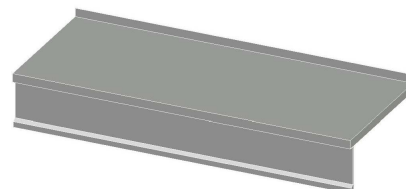
Prices do not include feet.

☞ Side covers are delivered if requested.

Type		Function		Length				Version Depth	
1	2	3	4	5	6	7	8	9	10
XL = X-Line Complete upper part of range with material thickness 2 mm 90° Version		Form of complete upper part of range 01 = Front and sides (left and right) 90° folding down, rear 90° folding up, Seamless operation panel on service side 02 = All sides 90° folding down Seamless operation panels both on service sides		Lengths key = 4-digit Example: 0400 = 400 mm 0500 = 500 mm ... 1000 = 1000 mm 1100 = 1100 mm ... 3600 = 3600 mm				70 =700 mm 80 =800 mm 90 =900 mm 73 =738 mm 83 =838 mm 10 =1038 mm 11 =1100 mm 12 =1200 mm 13 =1300 mm 14 =1378 mm 15 =1500 mm 16 =1600 mm 17 =1700 mm 18 =1800 mm	

Complete upper part of range, form 01 XL01

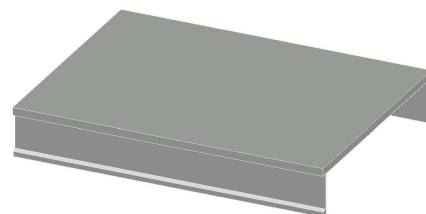
- Complete upper part of range existing of work top and operation panel
- Standard work top made of 2 mm CNS 1.4301
- Work top underside with reinforcement profiles made of CNS
- Integral drip mould on the long side
- Lowered edge on three sides, raised edge at the rear 50 mm
- Seamless operation panel at service side
- All corners continuously welded and ground
- Uniform polished microlon



Length	Art. No. Depth 700 mm	Price EUR	Art. No. Depth 800 mm	Price EUR	Art. No. Depth 900 mm	Price EUR
400 mm	XL01040070		XL01040080		XL01040090	
500 mm	XL01050070		XL01050080		XL01050090	
600 mm	XL01060070		XL01060080		XL01060090	
700 mm	XL01070070		XL01070080		XL01070090	
800 mm	XL01080070		XL01080080		XL01080090	
900 mm	XL01090070		XL01090080		XL01090090	
1000 mm	XL01100070		XL01100080		XL01100090	
1100 mm	XL01110070		XL01110080		XL01110090	
1200 mm	XL01120070		XL01120080		XL01120090	
1300 mm	XL01130070		XL01130080		XL01130090	
1400 mm	XL01140070		XL01140080		XL01140090	
1500 mm	XL01150070		XL01150080		XL01150090	
1600 mm	XL01160070		XL01160080		XL01160090	
1700 mm	XL01170070		XL01170080		XL01170090	
1800 mm	XL01180070		XL01180080		XL01180090	
1900 mm	XL01190070		XL01190080		XL01190090	
2000 mm	XL01200070		XL01200080		XL01200090	
2100 mm	XL01210070		XL01210080		XL01210090	
2200 mm	XL01220070		XL01220080		XL01220090	
2300 mm	XL01230070		XL01230080		XL01230090	
2400 mm	XL01240070		XL01240080		XL01240090	
2500 mm	XL01250070		XL01250080		XL01250090	
2600 mm	XL01260070		XL01260080		XL01260090	
2700 mm	XL01270070		XL01270080		XL01270090	
2800 mm	XL01280070		XL01280080		XL01280090	
2900 mm	XL01290070		XL01290080		XL01290090	
3000 mm	XL01300070		XL01300080		XL01300090	
3100 mm	XL01310070		XL01310080		XL01310090	
3200 mm	XL01320070		XL01320080		XL01320090	
3300 mm	XL01330070		XL01330080		XL01330090	
3400 mm	XL01340070		XL01340080		XL01340090	
3500 mm	XL01350070		XL01350080		XL01350090	
3600 mm	XL01360070		XL01360080		XL01360090	

Complete upper part of range, form 02 XL02

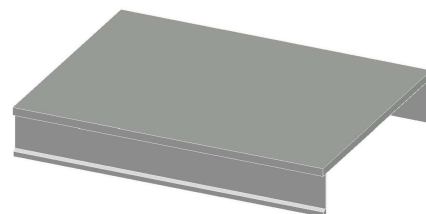
- Complete upper part of range existing of work top and two operation panels
- Standard work top made of 2 mm CNS 1.4301
- Work top underside with reinforcement profiles made of CNS
- Integral drip mould on the long side
- Lowered edge on all sides
- Seamless operation panels at both service sides
- All corners continuously welded and ground
- Uniform polished microlon



Length	Art. No. Depth 738 mm	Price EUR	Art. No. Depth 838 mm	Price EUR	Art. No. Depth 1038 mm	Price EUR	Art. No. Depth 1100 mm	Price EUR
400 mm	XL02040073		XL02040083		XL02040010		XL02040011	
500 mm	XL02050073		XL02050083		XL02050010		XL02050011	
600 mm	XL02060073		XL02060083		XL02060010		XL02060011	
700 mm	XL02070073		XL02070083		XL02070010		XL02070011	
800 mm	XL02080073		XL02080083		XL02080010		XL02080011	
900 mm	XL02090073		XL02090083		XL02090010		XL02090011	
1000 mm	XL02100073		XL02100083		XL02100010		XL02100011	
1100 mm	XL02110073		XL02110083		XL02110010		XL02110011	
1200 mm	XL02120073		XL02120083		XL02120010		XL02120011	
1300 mm	XL02130073		XL02130083		XL02130010		XL02130011	
1400 mm	XL02140073		XL02140083		XL02140010		XL02140011	
1500 mm	XL02150073		XL02150083		XL02150010		XL02150011	
1600 mm	XL02160073		XL02160083		XL02160010		XL02160011	
1700 mm	XL02170073		XL02170083		XL02170010		XL02170011	
1800 mm	XL02180073		XL02180083		XL02180010		XL02180011	
1900 mm	XL02190073		XL02190083		XL02190010		XL02190011	
2000 mm	XL02200073		XL02200083		XL02200010		XL02200011	
2100 mm	XL02210073		XL02210083		XL02210010		XL02210011	
2200 mm	XL02220073		XL02220083		XL02220010		XL02220011	
2300 mm	XL02230073		XL02230083		XL02230010		XL02230011	
2400 mm	XL02240073		XL02240083		XL02240010		XL02240011	
2500 mm	XL02250073		XL02250083		XL02250010		XL02250011	
2600 mm	XL02260073		XL02260083		XL02260010		XL02260011	
2700 mm	XL02270073		XL02270083		XL02270010		XL02270011	
2800 mm	XL02280073		XL02280083		XL02280010		XL02280011	
2900 mm	XL02290073		XL02290083		XL02290010		XL02290011	
3000 mm	XL02300073		XL02300083		XL02300010		XL02300011	
3100 mm	XL02310073		XL02310083		XL02310010		XL02310011	
3200 mm	XL02320073		XL02320083		XL02320010		XL02320011	
3300 mm	XL02330073		XL02330083		XL02330010		XL02330011	
3400 mm	XL02340073		XL02340083		XL02340010		XL02340011	
3500 mm	XL02350073		XL02350083		XL02350010		XL02350011	
3600 mm	XL02360073		XL02360083		XL02360010		XL02360011	

Complete upper part of range, form 02 XL02

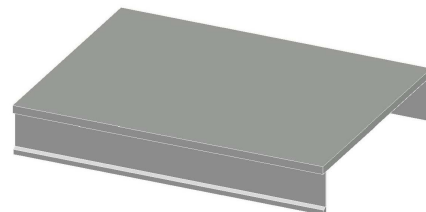
- Complete upper part of range existing of work top and two operation panels
- Standard work top made of 2 mm CNS 1.4301
- Work top underside with reinforcement profiles made of CNS
- Integral drip mould on the long side
- Lowered edge on all sides
- Seamless operation panels at both service sides
- All corners continuously welded and ground
- Uniform polished microlon



Length	Art. No. Depth 1200 mm	Price EUR	Art. No. Depth 1300 mm	Price EUR	Art. No. Depth 1378 mm	Price EUR
400 mm	XL02040012		XL02040013		XL02040014	
500 mm	XL02050012		XL02050013		XL02050014	
600 mm	XL02060012		XL02060013		XL02060014	
700 mm	XL02070012		XL02070013		XL02070014	
800 mm	XL02080012		XL02080013		XL02080014	
900 mm	XL02090012		XL02090013		XL02090014	
1000 mm	XL02100012		XL02100013		XL02100014	
1100 mm	XL02110012		XL02110013		XL02110014	
1200 mm	XL02120012		XL02120013		XL02120014	
1300 mm	XL02130012		XL02130013		XL02130014	
1400 mm	XL02140012		XL02140013		XL02140014	
1500 mm	XL02150012		XL02150013		XL02150014	
1600 mm	XL02160012		XL02160013		XL02160014	
1700 mm	XL02170012		XL02170013		XL02170014	
1800 mm	XL02180012		XL02180013		XL02180014	
1900 mm	XL02190012		XL02190013		XL02190014	
2000 mm	XL02200012		XL02200013		XL02200014	
2100 mm	XL02210012		XL02210013		XL02210014	
2200 mm	XL02220012		XL02220013		XL02220014	
2300 mm	XL02230012		XL02230013		XL02230014	
2400 mm	XL02240012		XL02240013		XL02240014	
2500 mm	XL02250012		XL02250013		XL02250014	
2600 mm	XL02260012		XL02260013		XL02260014	
2700 mm	XL02270012		XL02270013		XL02270014	
2800 mm	XL02280012		XL02280013		XL02280014	
2900 mm	XL02290012		XL02290013		XL02290014	
3000 mm	XL02300012		XL02300013		XL02300014	
3100 mm	XL02310012		XL02310013		XL02310014	
3200 mm	XL02320012		XL02320013		XL02320014	
3300 mm	XL02330012		XL02330013		XL02330014	
3400 mm	XL02340012		XL02340013		XL02340014	
3500 mm	XL02350012		XL02350013		XL02350014	
3600 mm	XL02360012		XL02360013		XL02360014	

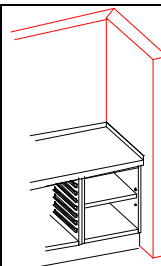
Complete upper part of range, form 02 XL02

- Complete upper part of range existing of work top and two operation panels
- Standard work top made of 2 mm CNS 1.4301
- Work top underside with reinforcement profiles made of CNS
- Integral drip mould on the long side
- Lowered edge on all sides
- Seamless operation panels at both service sides
- All corners continuously welded and ground
- Uniform polished microlon



Length	Art. No. Depth 1500 mm	Price EUR	Art. No. Depth 1600 mm	Price EUR	Art. No. Depth 1700 mm	Price EUR	Art. No. Depth 1800 mm	Price EUR
400 mm	XL02040015		XL02040016		XL02040017		XL02040018	
500 mm	XL02050015		XL02050016		XL02050017		XL02050018	
600 mm	XL02060015		XL02060016		XL02060017		XL02060018	
700 mm	XL02070015		XL02070016		XL02070017		XL02070018	
800 mm	XL02080015		XL02080016		XL02080017		XL02080018	
900 mm	XL02090015		XL02090016		XL02090017		XL02090018	
1000 mm	XL02100015		XL02100016		XL02100017		XL02100018	
1100 mm	XL02110015		XL02110016		XL02110017		XL02110018	
1200 mm	XL02120015		XL02120016		XL02120017		XL02120018	
1300 mm	XL02130015		XL02130016		XL02130017		XL02130018	
1400 mm	XL02140015		XL02140016		XL02140017		XL02140018	
1500 mm	XL02150015		XL02150016		XL02150017		XL02150018	
1600 mm	XL02160015		XL02160016		XL02160017		XL02160018	
1700 mm	XL02170015		XL02170016		XL02170017		XL02170018	
1800 mm	XL02180015		XL02180016		XL02180017		XL02180018	
1900 mm	XL02190015		XL02190016		XL02190017		XL02190018	
2000 mm	XL02200015		XL02200016		XL02200017		XL02200018	
2100 mm	XL02210015		XL02210016		XL02210017		XL02210018	
2200 mm	XL02220015		XL02220016		XL02220017		XL02220018	
2300 mm	XL02230015		XL02230016		XL02230017		XL02230018	
2400 mm	XL02240015		XL02240016		XL02240017		XL02240018	
2500 mm	XL02250015		XL02250016		XL02250017		XL02250018	
2600 mm	XL02260015		XL02260016		XL02260017		XL02260018	
2700 mm	XL02270015		XL02270016		XL02270017		XL02270018	
2800 mm	XL02280015		XL02280016		XL02280017		XL02280018	
2900 mm	XL02290015		XL02290016		XL02290017		XL02290018	
3000 mm	XL02300015		XL02300016		XL02300017		XL02300018	
3100 mm	XL02310015		XL02310016		XL02310017		XL02310018	
3200 mm	XL02320015		XL02320016		XL02320017		XL02320018	
3300 mm	XL02330015		XL02330016		XL02330017		XL02330018	
3400 mm	XL02340015		XL02340016		XL02340017		XL02340018	
3500 mm	XL02350015		XL02350016		XL02350017		XL02350018	
3600 mm	XL02360015		XL02360016		XL02360017		XL02360018	

90° Folding up / down of complete upper part of range		
Item	Art. No.	Price EUR
Folding up on left side - 50 mm high Price per folding up	EAA1	
Folding up on right side - 50 mm high Price per folding up	EAA2	
Folding up on rear side / sides - 100 mm high Price per running metre	EAAH	
Folding up on rear side / sides - 300 mm high Price per running metre	EAA11	
Folding up on rear side / sides - 100 mm high and 20 mm rear Price per running metre	EAA12	
Cover of folding up on sides Price per cover	EAAV	
Cover of folding up on rear side Price per running metre	EAVH	



Complete upper part of range - options		
Item	Art. No.	Price EUR
LED-Lightning below worktop ☑ Exclusively on the length side(s) ☑ Not retrofittable Basic price at length side up to max. 2.000 mm length Extra charge per running metre (of more than 2.000 mm in length)	ZXLEDGP ZXLEDLFM	
Operation panel of the upper part form XL01 painted in desired RAL color	ZXBL_LACKXL01	
Operation panel of the upper part form XL02 painted in desired RAL color	ZXBL_LACKXL02	
Handrail (round pipe) made of stainless steel Ø 40 mm / Total depth 100 mm with protective caps Basic price (up to 1.000 mm in length) Extra charge per running metre (of more than 1000 mm in length)	ZFHLGP ZFHLLFM	
Handrail (round pipe) made of stainless steel with Protectan coating in brass Ø 40 mm / Total depth 100 mm with protective caps Basic price (up to 1.000 mm in length) Extra charge per running metre (of more than 1000 mm in length) Extra charge for corner version (90° bend)	ZXHLMGP ZXHMLFM ZXHLMCECK	



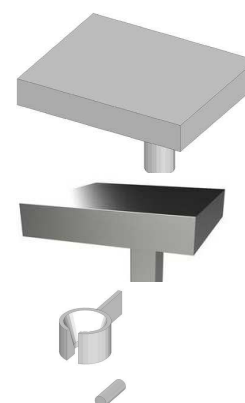
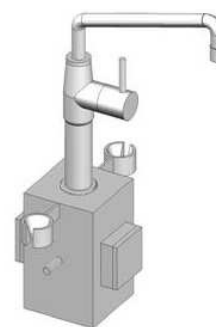
Complete upper part of range - connection or preparation at factory

Item	Art. No.	Price EUR
Plug type seam connection for 2 upper parts up to depth 900 mm	XLSV	
Welding of 2 upper parts at the factory up to depth 900 mm	XLVS	
Welding of 2 upper parts on site Incl. preparation of the weld seam in the factory (Price without travel costs)	XLVSO	
Preparing for a seam weld of 2 upper parts at factory	XLVW	

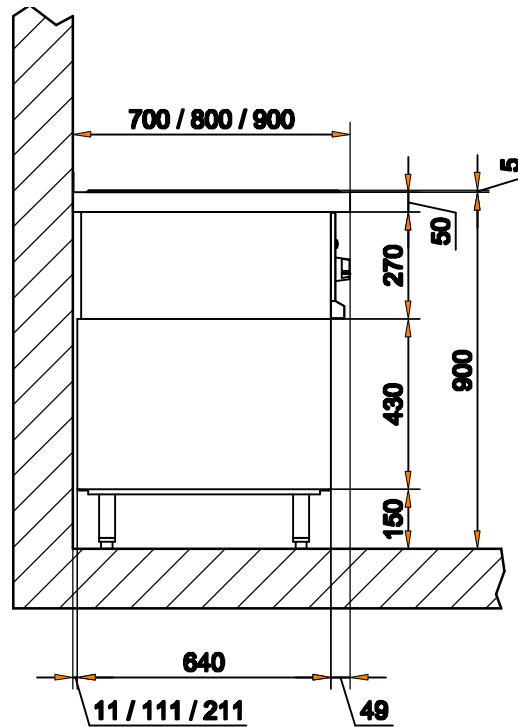


Complete upper part of range - superstructures

Description	Art. No.	Price EUR
Support for mixer, socket and mixing tape consisting of: 1x column 150 x 150 x 250 / 740 mm 1x socket 230 V 1x bracket for mixer and cup (incl. cup) 1x connection for mixing tape 1x KWC-one lever mixing tap 2/4" with drip stop Height 490 mm. spout projection 300 mm Installation depth at least 200 mm	SMS1000	
Support for mixer, socket and mixing tape consisting of: 1x column 150 x 150 x 250 / 740 mm 2x socket 230 V 2x bracket for mixer and cup (incl. cup) 1x connection for mixing tap 1x KWC-one lever mixing tap 2/4" with drip-stop Height 490 mm, spout projection 300 mm Installation depth at least 200 mm	SMS2000	
Support for mixer and socket consisting of: 1x column 150 x 150 x 250 mm 2x socket 230 V 2x bracket for mixer and cup (incl. cup) Installation depth at least 200 mm	SMS3	
Salamander shelf for mounting on complete upper part of range Dimensions of board (LxDxH): 520 x 500 x 100 mm Column Ø 102 mm / Height 400 mm Total height 500 mm	ODBS50	
Salamander shelf - square column for mounting on complete upper part of range Dimensions of board (LxDxH): 520 x 500 x 100 mm Square column with (LxDxH): 100 x 100 x 400 mm Total height 500 mm	ODBS50-Q	
Support for mixer for mounting on Board on column 1x bracket for mixer and cup (incl. cup)	MBH1	



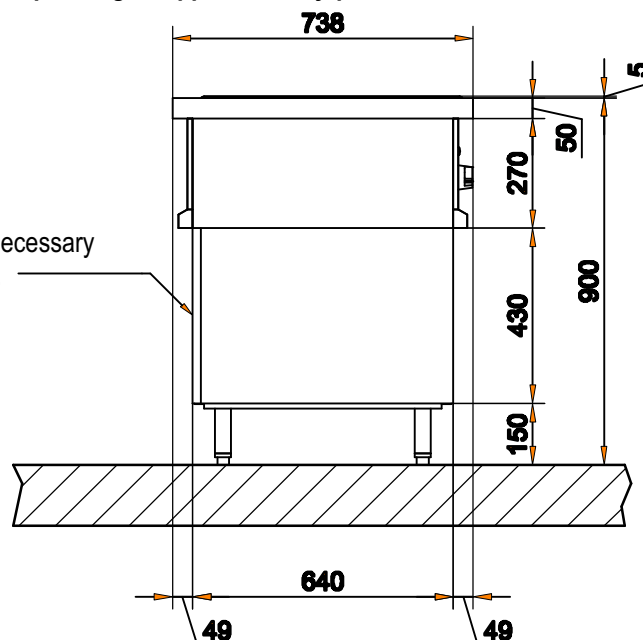
General Measurements - Wall assembly in row - base cabinet with depth 640 mm



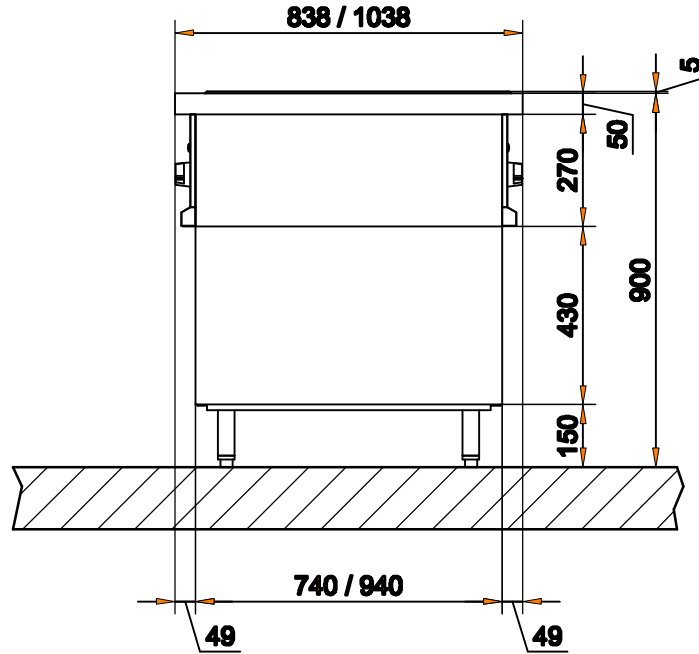
General Measurements - Room assembly in row - base cabinet with depth 640 mm

Operating of appliance only possible from one side

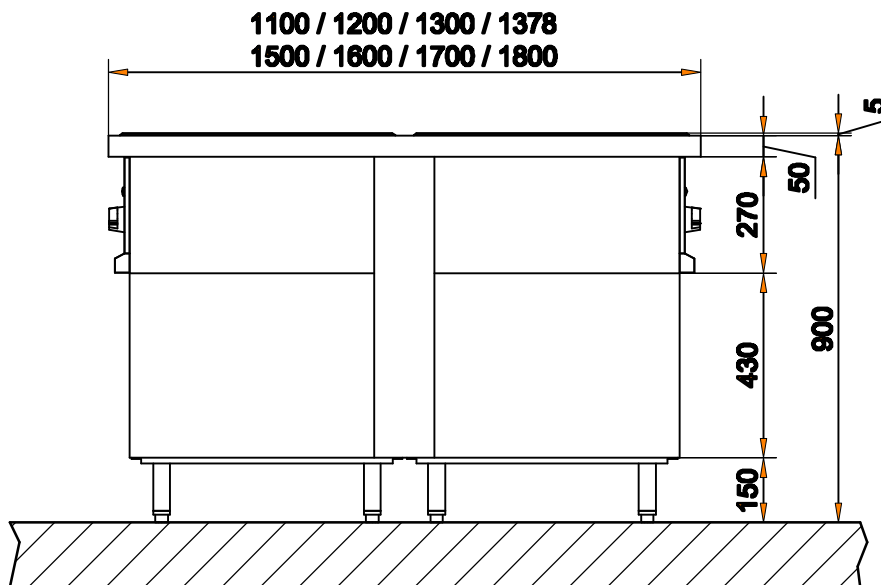
Rear panel (XLGRW) is necessary for room assembly in row.



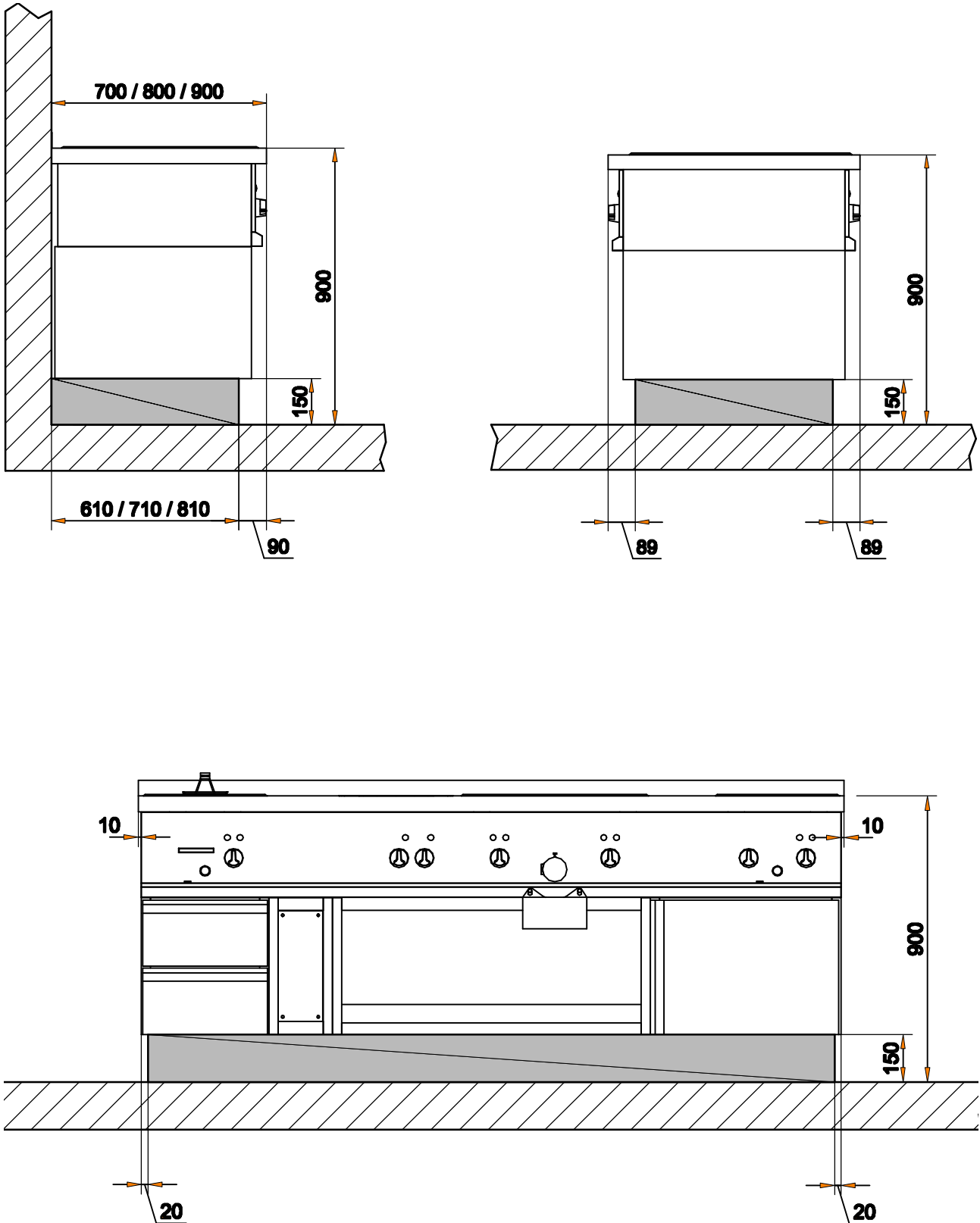
General Measurements - Room assembly in row - base cainet with depth 740 mm / 940 mm



General Measurements - Room assembly of block - different base cainet depths possible



Measurements plinth installation



All prices are net prices and are to be understood per piece. Our terms of delivery are: EXW Bad Mergentheim (according to Incoterms 2010), packing for land transport included, excluding vat.

Item	Art. No.	kW	Heat emission kW		Steam emission
			direct	latent	
Single-Pan Deep Fat Fryer	890980	8,0	0,72	5,60	8,24 kg/h
Dual-Pan Deep Fat Fryer	890983	2x 8,0	1,44	11,20	16,48 kg/h
Chip Scuttle GN 1/1	890986	0,85	0,11	0,17	
Bain-Marie GN 1/1	890988	1,0	0,125	0,20	0,29 kg/h
Cooker GN 1/1	890990	6,0	0,75	1,20	1,76 kg/h
Pan 400	890993	4,0	1,06	1,28	1,88 kg/h
Pan 600	890996	8,0	2,12	2,56	3,76 kg/h
Griddle Plate 400	890998	4,0	1,32	1,60	2,35 kg/h
Griddle Plate 600	891000	8,0	2,64	3,20	4,70 kg/h
Griddle Plate 800 S	891003	8,4	2,77	3,36	4,94 kg/h
Grill-/Griddle Plate 600	891005	8,0	2,64	3,20	4,70 kg/h
Steak Grill 400	891007	3,6	1,19	1,44	2,12 kg/h
Steak Grill 600	891008	5,0	1,68	2,04	3,00 kg/h
Steak Grill 800	891012	8,3	2,44	2,95	4,33 kg/h
Sausage Grill 600	891014	8,2	2,50	3,00	4,40 kg/h
Ceramic Range 1	891015	5,0	1,00	0,40	0,59 kg/h
2-Plate Electric Range	891018	5,2	1,00	0,40	0,59 kg/h
Electric Baking Oven GN 1 1/2	958484	4,6	1,61	0,74	1,08 kg/h
Induction Range 1	891024	7,0	0,49	0,20	0,29 kg/h
Induction Range 2	891026	10,0	0,70	0,28	0,41 kg/h
Induction Wok 1	891034	3,5	0,14	0,06	0,08 kg/h
Induction Wok 2	891035	5,0	0,20	0,08	0,12 kg/h
Ceramic Range F1	891016	5,0	1,00	0,40	0,59 kg/h
Ceramic Range F3	891017	2 x 5,0	2,00	0,80	1,18 kg/h
Induction Range F	891019	5,0	0,35	0,14	0,20 kg/h
Induction Hob 4Z	891023	16,0	1,12	0,45	0,66 kg/h

Item	Art. No.	kW	Heat emission kW		Steam emission
			direct	latent	
Induction Range F1	891025	7,0	0,49	0,20	0,29 kg/h
Induction Range F2	891028	10,0	0,70	0,28	0,41 kg/h
Induction Range F3	891032	2x 7,0	0,98	0,40	0,58 kg/h
Induction Range F4	891033	2x 10,0	1,40	0,56	0,82 kg/h

Item	Art. No.	kW	Heat emission kW		Steam emission
			direct	latent	
2-Burner Gas Range	891036	8,5	2,13	0,85	1,25 kg/h
Gas Grill 600	891041	10,3	3,61	4,12	6,06 kg/h
Gas Grill 800	891621	15,4	5,42	6,18	9,09 kg/h
Gas Lava Stone Grill 600	891042	10,3	3,61	4,12	6,06 kg/h
Gas Lava Stone Grill 800	891623	15,4	5,42	6,18	9,09 kg/h

The listed emission values are average values meant for normal operation.
 Calculated in accordance with VDI 2052 04/2006.



PALUX Aktiengesellschaft
Wilhelm-Frank-Straße 36
97980 Bad Mergentheim
GERMANY
Telephone: +49 7931 55 0
Telefax: +49 7931 55 88600
Internet: www.palux.de
E-Mail: info@palux.de
Art. No. 891572 / 27.01.2023

PALUX

Das gibt Freiheit