



Model: DF-28L

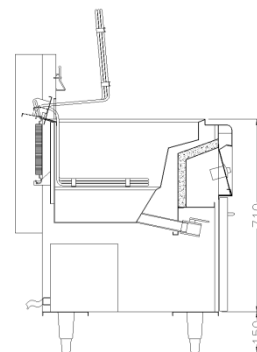
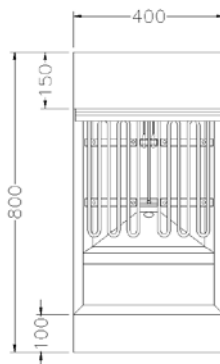
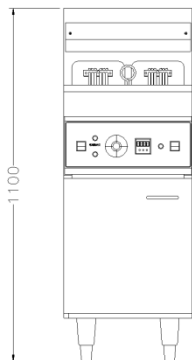
- DF-28L Electric fryer with cabinet
- DF-28L-2 Electric fryer with cabinet

STANDARD FEATURES

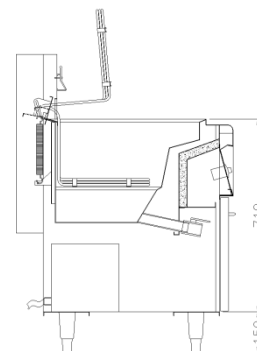
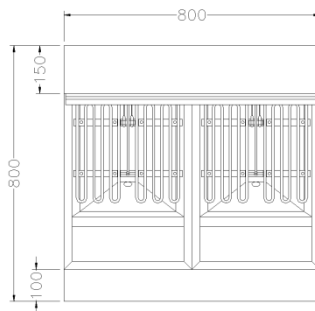
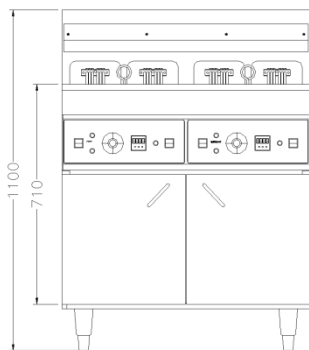
- Stainless steel frying pot, 28L capacity
- On/off power switch
- Timing function
- Swing-up heating elements for easy cleaning
- Deep cold zone with forward sloping bottom
- 1 inch drainage valve
- Oil draining extension
- Cool to touch Bakelite door handle
- Two baskets per tank

Plan View

DF-28L



DF-28L-2



Model	Power	Volts/HZ	Package Size	Capacity	N/W	G/W
DF-28L	18kw	380V/50~60HZ	92x52x118	28L	56kg	68kg
DF-28L-2	18kw*2	380V/50~60HZ	92x94x118	28L+28L	101kg	125kg